

GREATER

2023-2024 GUIDEBOOK

CONCORD

NEW HAMPSHIRE'S CAPITAL CITY



Food • Shopping • Entertainment
Nature • Things to do • Economic assets

WELCOME TO CONCORD

Whether you are looking for an extended stay hotel, a family-fun getaway to swim and play or you are traveling for business, our friendly staff is ready to welcome you.



Residence INN.
BY MARRIOTT

Residence Inn by Marriott
91 Hall Street, Concord, NH
603-226-0012

WWW.RESIDENCEINNCONCORD.COM



Fairfield
BY MARRIOTT

Fairfield Inn & Suites by Marriott
4 Gulf Street, Concord, NH
603-224-4011

WWW.CONCORDFAIRFIELDINN.COM



COURTYARD
BY MARRIOTT

Courtyard by Marriott & Grappone Conference Center
70 Constitution Ave.
Concord, NH
603-225-0303

WWW.COURTYARDCONCORD.COM



Comfort
™

Comfort Inn
71 Hall Street, Concord, NH
603-226-4100

WWW.COMFORTINNCONCORD.COM



tru
by HILTON®

Tru by Hilton
406 South Main Street
Concord, NH
603-931-1TRU (878)

WWW.HILTON.COM/EN/HOTELS/CONDIRU-TRU-CONCORD/

WWW.STAYCONCORD.COM

NE-412294



Welcome to the Capital Area



Welcome to Concord, New Hampshire. I hope you'll take some time to get to know our wonderful community.

Concord is centrally located at the intersection of three interstate highways, with easy access to many of the state's other amenities. It is less than one hour from pristine ocean beaches, crystal clear lakes and the mighty White Mountains. Boston is less than 90 minutes away, the nearby Manchester-Boston Regional Airport offers service from many top airlines, and high-speed internet connects our business community with professionals worldwide.

Concord prides itself on civic involvement and its sense of community, along with many ways to get involved and make a difference. There are numerous opportunities here, whether you're starting a family, downsizing for retirement, or creating your own start-up business.

With more than 85 miles of trails and open spaces, a thriving downtown and arts scene, and quality public and private schools, Concord has been recognized nationally as one of the top cities for its vivacity, safety, and natural beauty. I hope you'll consider calling it home!

Mayor Jim Bouley
City of Concord



We are proud to present the 2023-2024 Guidebook to Greater Concord, showcasing one of the finest communities in the Northeast. Year after year, publications rank Concord among the nation's top micropolitan (population under 50,000) communities. Recent census data shows that the Heights community in Concord is one of the most racially diverse neighborhoods in the state, and our region is attracting more people aged 18-39 than any other age group.

Concord is a fast-growing city, with incredible assets such as high-quality education, excellent community safety, and stunning natural resources — from rivers to mountains to preserved forests and wildlife. It's no surprise that Concord, New Hampshire, is the envy of most communities in the nation.

Whether you enjoy live music, theater, history and museums, fine dining, hiking, kayaking, skiing or craft breweries, you can find it all here. Greater Concord is the perfect place to build community, raise a family, grow a business, or work remotely with easy access to New England's largest cities.

Ellyssa Alfieri
Chair, Board of Directors
Greater Concord Chamber of Commerce

What's inside

- 4 What You'll Love About Greater Concord**
- 8 New Hampshire's Main Street**
- 10 Bonus Economic Assets**
- 12 Natural Beauty**
- 15 Arts & Entertainment**
- 16 Food & Drinks**
- 18 Fairs & Festivals**
- 20 Emerging Leaders**
- 22 Merrimack Valley: An Orientation to the Region**
- 23 The Area's Leading Employers**
- 24 Up Close: Concord and Surrounding Towns**
- 26 The Towns: Charm and Convenience**
 - Allenstown • Boscawen • Bow • Canterbury
 - Chichester • Dunbarton • Epsom • Henniker
 - Hopkinton/Contoocook • Loudon • Pembroke
 - Penacook • Pittsfield • Salisbury • Warner • Webster
- 31 Itinerary: Things to Do and See**
- 36 Healthcare**
- 39 Education**
- 44 Granite State Highlights**
- 45 Fast Facts**

Credits

As New Hampshire's state capital chamber of commerce, the Greater Concord Chamber of Commerce develops economic opportunities, strengthens the business climate and enhances the quality of life in the Capital Region.

Chamber President: Timothy G. Sink, CCE

Publisher: Concord Monitor Publishing

Editor: Emily Marsh

Production and Design: Concord Monitor Publishing

Advertising: Tim Brennan, Joelle Ciras, Joelle Del Signore, Justin Graybill, Steve Pare, Deborah Spaulding

The 2023-2024 Guidebook to Greater Concord is a publication of the Greater Concord Chamber of Commerce. For additional information, contact the Greater Concord Chamber of Commerce at info@concordnhchamber.com or (603) 224-2508. While every effort has been made to ensure the accuracy of the information contained in this publication, the Greater Concord Chamber of Commerce and Concord Monitor Publishing will not be held responsible for any errors that do occur.

Copyright © 2023 Greater Concord Chamber of Commerce. All rights reserved. Reproduction in whole or in part without permission is prohibited.

COVER: Downtown Concord mural by James Chase. **INSIDE:** Unless stated otherwise, all inside photos are credited to the Greater Concord Chamber of Commerce.



Concord Monitor

What You'll *Love* About Greater Concord



The Bank of NH Stage on Main Street is a theatre, club and premiere live music venue.

Location

Centered in the heart of the Northeast, New Hampshire's State Capital is an easy ride to the ocean, lakes, mountains, quintessential New England towns, major cities and breathtaking attractions.

History and community

Concord's history began with the Pennacook-Abenaki People, followed by English settlers in 1726. Explore the city's historic downtown, featuring the New Hampshire State House — the oldest U.S. State Capitol where the legislature still occupies its original chambers. When you visit Concord, you'll discover historic sites embedded into a thriving modern community that's filled with murals, unique shops, and bustling restaurants.



Four seasons of beauty

Whether you enjoy bird watching and walks in the woods, kayaking and fishing, embarking on world-class hikes, or skiing down powdery slopes, New Hampshire and the Capital Region offer quick access to an endless variety of outdoor activities.



Tax-free shopping

Take a stroll down Concord's picturesque Main Street and you'll find designer fashion, antiques, handcrafted furniture, artisan jewelry, home décor, handmade chocolates, books and so much more.

Art and culture

Concord is home to a dazzling live music and performing arts scene. With the largest theater in New Hampshire, contemporary sculptures on display downtown, an award-winning independent cinema and numerous outdoor festivals and markets, there is always something new and exciting to enjoy.



Restaurants, cafés, breweries and wineries

Whether you're looking for farm-to-table dining, authentic Mexican fare, New England cider doughnuts or craft breweries, Concord's mouth-watering offerings will keep you coming back for more.

Autumn on Main Street in downtown Concord; Trees line Kimball Jenkins School of Art; and a downtown Donkey Kong mural by Positive Street Art.



Elder Law: The emerging need

Preserving the economic integrity of the elderly client and providing guidance in a complex regulatory environment.

Estate Planning
Medicaid Eligibility and Appeals
Asset Protection
Nursing Home Discharges
Probate Litigation
Guardianships
Trust and Probate Administration

Laboe & Tasker, PLLC is known for its experience and achievement in the area of Medicaid eligibility and difficult probate administration.

6 Loudon Road, Suite 502
Concord, NH 03301-5321



Phone: 603.224.8700
Fax: 603.225.5223

Laboelaw.com

NE-411681

Live in good company.



This vibrant, friendly and unpretentious continuing care retirement community on two campuses is filled with resort-style amenities, all in the company of friends.

Call 1-800-457-6833 to schedule a tour
or visit hvhinfo.com to learn more!



Life in the company of friends.



Toll Free: 1-800-457-6833
www.hvhinfo.com



NE-411687

Full service FBO serving Concord Municipal Airport



Private and Corporate Aviation
our #1 priority

"WE CAN TEACH YOU TO FLY"

Flight Instruction / Aircraft Rental
Maintenance & Repair
Aircraft Parts / Pilot Supplies
Hangar Storage / Tiedown

71 Airport Road
Concord, NH 03301
603-228-2267

www.confbo.com



Shell Aviation



We are a charitable organization which exists to meet the health needs of individuals within the communities

We serve. We care.

OUR HEALTH SYSTEM INCLUDES EXPERTISE IN:

INSPIRE® Sleep Apnea Treatment

Innovative Rehabilitation treatments such as LSVT® BIG approach for Parkinson's disease

Aesthetic, Cosmetic, and Reconstructive Surgical and Non-surgical Solutions

Level II Special Care Nursery

American Academy of Sleep Medicine accredited Sleep Center

Pelvic Medicine

Open Heart Surgery

Metastatic Breast Cancer advanced treatments

Chronic Disease Pathways for such conditions as diabetes

Total Joint Replacement

Low-dose Computed Tomography for Lung Cancer Screenings

Fusion Biopsy for detecting Prostate Cancer

3D Mammography to Detect Early Signs of Cancer

Trauma Care as a Level II Verified Trauma Center

Medication Assisted Therapy for substance misuse

Complementary Cancer support services provided at our HOPE Resource Center

Anticoagulation Management

Allergy Testing, Education, Medication Management and Immunotherapy

and so much more.

We are...

CH CONCORD HOSPITAL
Your Regional Health System

CONCORD | LACONIA | FRANKLIN

250 Pleasant Street Concord, NH 03301

80 Highland Street Laconia, NH 03246

15 Aiken Avenue Franklin, NH 03235

concordhospital.org



Concord Monitor

The Concord Farmers Market sets up on Capitol Street next to the state house every Saturday from spring to fall. The Winter Farmers Market moves indoors at Eagle Square. Learn more on page 19.

NH's Main Street

This award-winning downtown is a dining, shopping and entertainment destination

"Concord's Main Street really is New Hampshire's Main Street."

– U.S. Senator Jeanne Shaheen

TOUR THE DOWNTOWN

Concord's downtown is the heartbeat of the region. Step onto the broad pedestrian-friendly sidewalks of Main Street, and begin your journey at the Capital Region Visitors Center at 49 South Main Street. While you're there, pick up a variety of brochures for things to do in the Granite State, grab a copy of "A Walking Tour of Historic Downtown Concord, NH" and view complimentary exhibitions from NH Art Association, NH Furniture Masters Association and the League of NH Craftsmen headquarters gallery.

Across the street lies New Hampshire's largest performing arts theatre, the Capitol Center for the Arts' Chubb Theatre. Take a few steps up the street and you'll be at the doors of Gibson's Bookstore — northern New England's largest independent bookstore. This gem in the downtown hosts over 100 author events every year, featuring national superstars like Erik Larson, Jodi Picoult and Louise Penney. Just up the street, Red River The-

atres — Concord's indie cinema — shows current films, classics, documentaries, family-friendly movies and niche favorites like the Rocky Horror Picture Show.

As you walk up Main Street, enjoy a display of outdoor sculptures in the rotating "Art on Main" exhibit — presented annually by the City of Concord and Greater Concord Chamber of Commerce. Your travels will lead you into one of New Hampshire's most picturesque shopping districts, featuring a variety of specialty stores, boutiques and galleries, interspersed between cafés, chic restaurants and pubs.

Walking up North Main Street will bring you to the New Hampshire State House — the oldest state capitol where the legislature still occupies its original chambers. Built in 1819, this iconic building holds over 100 battle flags, historic portraits, murals and more. Nearby, the New Hampshire Historical Society and New Hampshire State Library, the oldest state library in America, offer a



In 2022, Capital Plaza, just off of Main Street, hosted an art installation featuring rainbow umbrellas.



Local artist Ahmad Gazelle of Rainmaker Pottery Studio sells his handmade ceramics near the Concord Food Co-Op on warm summer days.

treasure trove of artifacts for history-lovers to explore.

Downtown Concord is a fast-growing, thriving community where new businesses are constantly popping up between historic buildings and longstanding institutions. You'll stumble upon musicians, outdoor events and festivals in the pocket parks, and smell freshly-baked pastry in the air when you walk to

the vibrant farmers market. Concord is the perfect place to shop, dine, work and live.

STATE GOVERNMENT CENTER

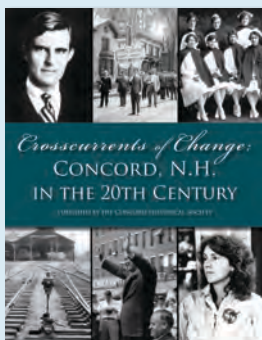
As the state capital and county seat for Merrimack County, Concord is headquarters to state, county, local and federal agencies. New Hampshire boasts the largest legislature in the country, with 400 House and 24 Senate members who are paid \$100 annually, making elected service a labor of love. Every four years, the city claims the national lime-light for the first-in-the-nation primary election. For 100 years, presidential can-

didates have flocked to the region in hopes of victory, seeing outstanding voter turnout in this key election.

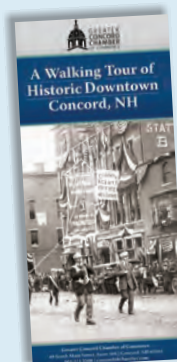
THE SAFEST CAPITAL CITY

Concord and the surrounding communities boast some of the lowest crime rates in the country. In 2022, WalletHub named Concord the safest U.S. capital city in the country. Concord Police employs 90 officers and Liberty — the state's first comfort dog — who provides emotional support for those experiencing trauma and moments of crisis. Concord Fire has four fire stations and 99 employees.

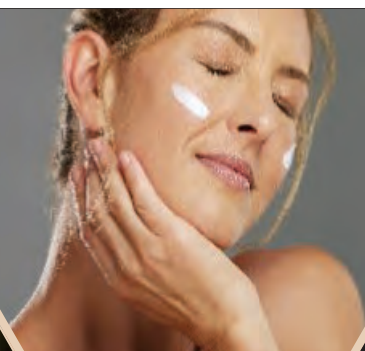
Learn more about Concord's history



Stop by the Greater Concord Chamber of Commerce for our "A Walking Tour of Historic Downtown, Concord, NH," or view this guide online at visitconcord-nh.com. You can also read more about Concord's colorful history in "Crosscurrents of Change: Concord, N.H. in the 20th Century," published by the Concord Historical Society. This fascinating book is available for sale at the Chamber's Visitor Center and Gibson's Bookstore.



We are passionate about honeybees and donate a portion of all sales to honeybee sustainability.



Beeline LLC
beelineskincare.com
603.470.6661



NH Made
Women Owned & Operated
2023 SBA Award Winner
Lifetime Members of NH
Beekeepers Assoc.

Bonus Economic Assets

New Hampshire residents are proud to earn without a state income tax! New Hampshire boasts one of the lowest unemployment rates in the country. Our workforce is highly educated, with excellent high school graduation rates and a large percentage of the population holding college degrees. With a historically stable and robust economy, Greater Concord is the ideal place to start a business or relocate a corporate headquarters.

EASE OF TRAVEL

Concord sits at the juncture of three interstates (I-93, I-89 and I-393) and is easily the most centrally located and accessible city in New Hampshire. Concord is close to Boston, the White Mountains and New Hampshire's pristine seacoast. The nearby Manchester-Boston Regional Airport offers service from top airlines, and Concord Coach Lines, Inc. connects travelers to destinations from Boston to the Lakes Region to the White Mountains.

A REMOTE WORK UTOPIA

Remote workers in Concord get the best of both worlds: cutting-edge technology and proximity to forests, lakes and other breathtaking natural sites. Concord boasts connection to a lightning-fast Fiber-to-the-Home (FTTH) network. Installed by Breezeline, one of the nation's largest cable and internet operators, this powerful network provides symmetrical internet speeds up to 10 Gbps — among the fastest speeds you can get in the country. Matching download and upload speeds make virtual meetings, cloud-based interfaces and file sharing a breeze.

ACCESS TO POLICYMAKERS

Concord is the state capital and county seat, and has one of the most accessible governments in the country. Businesses in Concord can advocate for issues at the State House, and residents are able to easily contact their representatives and have conversations about proposed legislation.



PHOTOS FROM TOP TO BOTTOM: Capitol Center for the Arts created an innovative Culinary Artist in Residence program in 2023 – an initiative that provides a business incubator space for New Americans and other underserved individuals. (Photo by Geoff Forester, Concord Monitor); Offered annually by the Greater Concord Chamber of Commerce for nearly three decades, Leadership Greater Concord (LGC) introduces area professionals to different aspects of the city during day-long sessions; Launch NH, powered by Softeq Venture Studio, aims to stimulate early-stage innovation in the New Hampshire and New England region to help cultivate a successful startup community, create jobs, and diversify the economy. (Photo by Lipofskyphoto.com).

RESPONSIVE CITY STAFF

City of Concord officials are committed to innovation, and are ready to assist businesses interested in relocating or expanding. Greater Concord is home to a growing number of companies from a wide range of industries, including tech and manufacturing. The Greater Concord Chamber of Commerce and City of Concord work closely to develop projects, and help the Capital Region continue to grow and thrive.

GREATER CONCORD CHAMBER OF COMMERCE

The Greater Concord Chamber of Commerce, New Hampshire's state capital chamber of commerce, represents nearly 900 businesses and organizations in the Capital Region and beyond. Member benefits include state and local advocacy, outstanding networking opportunities, marketing, advertising and referrals, employee benefits, professional development opportunities and one of the state's most vibrant young professionals networks. Learn more about Concord Young Professionals Network (CYPN) on Page 20.

Business Resources

City of Concord, Community Development Department

City Hall, 41 Green St., Concord,
(603) 225-8595, concordnh.gov

Greater Concord Chamber of Commerce

49 S. Main St., Suite 104, Concord,
(603) 224-2508, concordnhchamber.com

New Hampshire Department of Business and Economic Affairs

100 North Main St., Suite 100, Concord,
(603) 271-2591, dbea.nh.gov

Business Advising

New Hampshire Small Business Development Center

88 Commercial St., Manchester,
(603) 397-2518, nhsbdc.org

Merrimack Valley Score

275 Chestnut St., Suite 133, Manchester,
(603) 666-7561, merrimackvalley.score.org

U.S. Small Business Administration

55 Pleasant St., Suite 3101, Concord,
(603) 225-1400, sba.gov/nh

Coworking Space

HRKNSScowork

11 South Main St., Suite 200, Concord,
(909) 660-3301, HRKNSScowork.com

Development & Financing

Capital Region Development Council

20 Montgomery St., Concord,
(603) 496-1875, crdc-nh.com

Central NH Regional Planning Commission

28 Commercial St., Suite 3, Concord,
(603) 226-6020, cnhrpc.org

New Hampshire Community Loan Fund

7 Wall St., Concord, (603) 224-6669,
communityloanfund.org

Downtown Concord Businesses

Intown Concord

49 S. Main St., Suite 202, Concord,
(603) 226-2150, intownconcord.org

Technology

Launch NH

11 South Main Street, Unit 200,
(603) 502-7825, launchnh.com

New Hampshire Tech Alliance

30 Amherst St., Suite 3, Manchester,
(603) 935-8951, nhtechalliance.org

THE TRUSTED CHOICE

Getting over a major medical crisis isn't easy, but a trusted provider can help ease the burden. At our hospital, we create rehabilitation programs that are specifically designed for each patient's needs, using advanced technology and innovative treatments to maximize recovery. It's why so many people and their caregivers choose us. And why we are the trusted choice of a growing number of medical professionals.



Encompass Health

Rehabilitation Hospital of Concord

encompasshealth.com/concordrehab



©2022 Encompass Health Corporation. MyTurn



The Oak Hill Trails are nearly seven miles long, offering multiple routes, and are open year-round. This trail sees hikers, mountain bikers, birders, snowshoers and cross-country skiers, depending on the season.

Natural Beauty

The City of Concord boasts more than 7,200 acres of city conservation land. There are more than 323 acres over 19 parks, 80 miles of hiking trails, four community centers, a municipal golf course and an ice arena. According to a 2023 study by Nearmap, trees cover 49.2% of Concord's residential area, making the city the leafiest capital city in the Northeast and eighth leafiest capital in the U.S. overall.

The New England climate offers four beautiful seasons of recreation — enjoy a serene morning of fishing in the spring, take a dip in the Merrimack River during the hot summer months, hike through stunning foliage in the fall, and snowshoe through fresh snow in the winter.

Concord features numerous parks that offer everything from pickleball courts to swimming pools and a splash pad for kids. Sports enthusiasts can enjoy basketball, baseball, soccer, football, tennis, lacrosse and

more. The fun doesn't stop in the winter months; White Park features a dedicated sledding hill and outdoor skating rink for all to enjoy.

If you're looking for a fun outdoor activity, book a trip with Scenic Railriders. Pedal your way along the Merrimack River on a 6.4-mile scenic route. Or visit New Hampshire Audubon's McLane Center, where you can wander the trails, pollinator gardens and Raptor Mews — featuring New Hampshire's birds of prey. Or bring a picnic and explore 90 acres of nature trails at the Society for Protection of NH Forests; the solar-powered Conservation Center also features indoor exhibits and a gift shop.

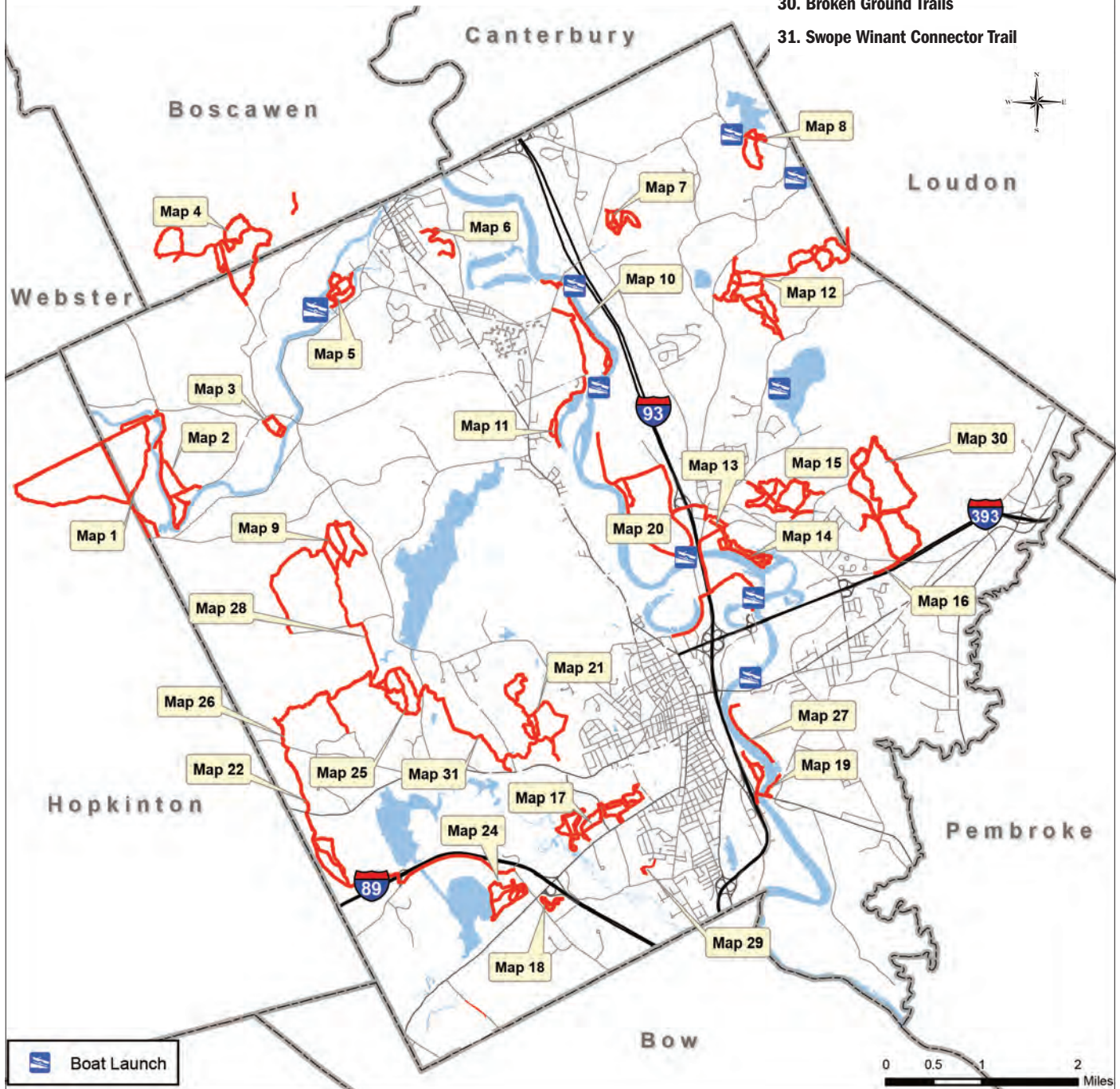
There's plenty to explore within the City of Concord itself, but you don't have to go far for world-renowned outdoor recreation. Some of New England's best hiking, downhill skiing, cross-country skiing and boating are readily accessible from Concord's central location.



The purple lilac is New Hampshire's state flower, and blooms in springtime.

CONCORD'S PUBLIC TRAIL SYSTEM

1. Mast Yard State Forest Trail
2. Jim Hill Riverwalk & Lehtinen Park Trail
3. O'Reilly-Fleetham Trail
4. Weir Road-Boscawen Town Forest Trail
5. Contoocook River Park Trail
6. Rolfe Park Trail
7. Spear's Park Trail
8. Riley Trail
9. Carter Hill Orchard Trail
10. Sewalls Falls Park Trail
11. Morono Park Trail
12. Oak Hill Trail
13. Merrill Park Trail
14. SPNHF Trail
15. Batchelder Mill Road Trails
16. East Sugar Ball Road Trail
17. Turkey River - White Farm Trail
18. Upton-Morgan State Forest Interpretive Trail
19. Terrill Park Trail
20. East Concord Trails
21. Winant Park Trail
22. Dimond Hill Farm Trail
23. Trail Removed
24. NH Audubon Society Trail
25. Marjory Swope Park Trail
26. West End Farm Trail
27. Merrimack River Trail
28. WEFT & Carter Hill Connector and Rossvie Trails
29. Russell Martin Park Trails
30. Broken Ground Trails
31. Swope Winant Connector Trail



Special Offer

Chamber Members

- ✓ **Concord Monitor (Every Day)**
- ✓ **Concord Insider (Every Week)**
- ✓ **Monitor Extra (Every Week)**
- ✓ **ConcordMonitor.com (Daily)**
- ✓ **Capital Buzz (24/7)**



**Low cost, low maintenance
ad plans to build your brand!**

Run Every Day/All Year!

Programs starting at only \$250 per month

**Contact Steve Pare, Advertising Director
(603)369-3242 • spare@cmonitor.com**





Photo by Troy Cromwell / Capitol Center for the Arts

The Bank of NH Stage hosted New Hampshire artists Martin Toe and Destin Boy Official for a Black History Month Unity Concert in February 2023.

Arts & Entertainment

Concord has emerged as New Hampshire's cultural center

Audiences travel from near and far to visit the city's four performing arts theatres and see world-class entertainment ranging from touring Broadway shows, concerts from nationally acclaimed artists, world-premiere theatre performances and much more.

In 2017, the Greater Concord Chamber of Commerce, in partnership with Americans for the Arts, measured the direct economic impact of cultural institutions in the Greater Concord region. Audience spending and arts-related purchases amounted to \$31.2 million annually — which represents only a portion of the impressive value of the creative economy in the Capital City. Concord's cultural assets continue to grow!

MUSIC

Street performers fill downtown Concord with live music, families enjoy free outdoor concerts in the beautiful parks and city squares, bars and restaurants welcome local performers, students travel across New England to take classes

at Concord Community Music School, and Concord's premiere performance venues host artists from every genre. The Capitol Center for the Arts' Bank of NH Stage is the city's newest theatre. Its retractable seating allows the venue to serve as a club with an open floor for dancing, and host live music performances with elaborate light displays and state-of-the-art sound quality. The Stage also features multiple bars and delicious food — ranging from classic pub fare to Somali meat pies created by the current Culinary Artist in Residence, Batulo's Kitchen.

THEATRE

Concord is home to the largest indoor theatre in the state — Capitol Center for the Arts' Chubb Theatre. The beautiful vaudeville-era venue hosts Broadway shows, ballet performances, celebrity shows and more. For an up-close theatre experience, The Hatbox Theatre's small "black box" auditorium is the perfect venue for comedy, improv and deep

emotional dramas. Concord is also proud to house the Concord City Auditorium, a theatre run entirely by volunteers, in partnership with the city, that offers community-based art and entertainment.

ART, FILM AND CREATIVE MAKING

Take a stroll down Concord's Main Street, and you'll find the League of NH Craftsmen headquarters gallery, an independent movie theatre, outdoor sculptures, murals and more. A short distance from Main Street sits the majestic Kimball Jenkins, Inc. estate that offers high-quality art classes for the community, gallery exhibits, a summer arts camp for kids, artist-in-residence opportunities and more. Concord Makerspace features a woodshop, textiles studio, prototyping/electronics equipment, and machine and bicycle shop. This community workspace is the perfect environment for creators to feed each other's inspiration and collaborate on projects.



Photo by New Hampshire Pizza Co.

New Hampshire Pizza Co's delicious brick oven pizza features fresh ingredients from local farms.

Food & drinks

Pick your favorite – Concord has something for everyone

Concord offers a mouth-watering variety of food and drinks. From home-made doughnuts to flavorful Mexican cuisine, sushi, vegan dining and craft breweries, the city is a hub for chic restaurants, pubs and cafés.

CASUAL DINING

110 Grill

80 Storrs Street, 110grill.com/concord-nh

Aces Restaurant & Bar

1 Beaver Meadow Drive, bmhc.golf/weddings-and-banquets

Alan's of Boscawen, Inc.

133 North Main Street, Boscawen, alansofboscawen.com

Arnie's Place

164 Loudon Road, arniesplace.com

Barley House Restaurant & Tavern

132 North Main Street, thebarleyhouse.com

C.C. Tomatoes

209 Fisherville Road, cctomatoes.com

Canterbury Tavern

15 West Road, canterburywoodscs.com

Chief's Place Pizza and Restaurant

348 Village Street, Penacook, chiefspizzarestaurant.com

Col's Kitchen

55 South Main Street, colsplantbased.com

Common Man Concord

25 Water Street, thecman.com

Constantly Pizza, Inc.

South Main Street/Fisherville Road, Penacook, constantlypizza.net

Daniel's Restaurant & Pub

48 Main Street, Henniker, danielsofhenniker.com

Domino's Pizza

202 North Main Street, dominos.com

Dos Amigos Burritos

26 North Main Street, dosamigosburritos.com

Draft Sports Bar & Concord Casino

67 South Main Street, draftsportsbar.com

EJ's on Main

172 North Main Street, ejsonmain.com

El Rodeo Mexican Restaurant

22 Loudon Road, el-rodeo-nh.com

Five Guys

56 Fort Eddy Road, fiveguys.com

Flanagan's Southender

250 South Street, flanagansouthender.com

Hermanos Cocina Mexicana

11 Hills Avenue, hermanosmexican.com

Live Juice

5 South Main Street, livejuicenh.com

Margaritas

1 Bicentennial Square, margs.com

McDonald's

Loudon Road / South Main Street / Fisherville Road,
mcdonalds.com/us/en-us.html

New Hampshire Pizza Co

76-78 North Main Street,
newhampshirepizzaco.com

Out of Bounds Sports Pub & Restaurant / Loudon Country Club

653 Route 106 North, Loudon,
loudoncc.com/barandgrill

Pembroke Pub

42 Whittemore Road, Pembroke,
pembrokepinescc.com/pub/info

Post Restaurant

58 North Main Street / 125 Fisherville Road,
postrestaurantnh.com

Red Arrow Diner, Concord

112 Loudon Road, redarrowdiner.com

Red Blazer Restaurant

72 Manchester Street, theredblazer.com

Smokeshow Barbeque

231 South Main Street,
smokeshowbbq.com

Szechuan Gardens Chinese Restaurant, Inc.

108 Fisherville Road,
szechuangardennh.com

T-BONES Great American Eatery

404 S Main St, t-bones.com

Tropical Smoothie Café

240 Loudon Road, Unit 1,
locations.tropicalsmoothiecafe.com/nh/concord/240-loudon-rd

Twelve 31 Cafe & Catering

100 N Main St Suite 101, twelve31.events

UNO Pizzeria and Grill

15 Fort Eddy Road, unos.com

VIBES Gourmet Burgers

25 South Main Street,
vibesgourmetburgers.com

Washington Street Café & Catering

88 Washington Street,
washingtonstreetcatering.com

Windmill Restaurant Inc

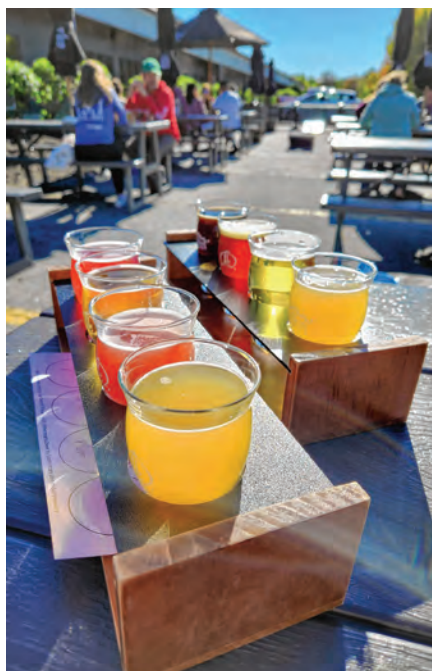
172 Loudon Road,
windmillfamilyrestaurantinc.com

The Works Bakery Café

42 North Main Street, workscafe.com

Wrap City

273 Loudon Road, Suite 3,
wrapcitysandwiches.com



Lithermans Limited Brewery offers a great selection of brews, all with musical spins.

BAKERIES AND COFFEE SHOPS**Brothers Cortado LLC**

3 Bicentennial Square,
brotherscortado.com

Gibson's Cafe

45 South Main Street,
gibsonsbookstore.com/cafe

New Hampshire Doughnut Company, LLC

2 Capital Plaza, nhdoughnutco.com

Revelstoke Coffee LLC

100 N Main St, revelstokecoffee.com

FINE DINING**Angelina's Ristorante Italiano**

11 Depot Street, angelinasrestaurant.com

Colby Hill Inn/The Grazing Room

33 The Oaks Street, Henniker,
www.colbyhillinn.com

Granite Restaurant & Bar

96 Pleasant Street, graniterestaurant.com

O Steaks & Seafood

11 South Main Street, osteakskoncord.com

Revival Kitchen & Bar

11 Depot Street, revivalkitchennh.com

BEER AND WINE**Concord Craft Brewing Company, LLC**

117 Storrs Street, concordcraftbrewing.com

Feathered Friend Brewing

231 South Main Street,
featheredfriendbrewing.com

Lithermans Limited Brewery

126 Hall Street, Unit B, lithermans.beer

SHARA Vineyards

82 Currier Road, sharavineyards.com

SPECIALTY FOODS**Apple Hill Farm**

580 Mountain Rd, applehillfarmnh.com

Celeste Olivia

8 North Main Street, celesteoliva.com

Concord Farmers Market

Capitol Street, concordfarmersmarket.com

Concord Food Co-op

24 South Main Street,
concordfoodcoop.coop

Downtown Concord**Winter Farmers Market**

7 Eagle Square,
downtownconcordwinterfarmersmarket.com

Granite State Candy Shoppe LLC

13 Warren Street,
granitestatecandyshoppe.com

Granite State Naturals

170 North State Street,
granitestatenaturals.com

Sunnyside Maples, Inc.

1089 Route 106, North Loudon,
sunnysidemaples.com

True Confections Candies & Gifts

211 Loudon Road, Suite D,
trueconfectionsnh.com

Wine'ing Butcher

16 Sheep Davis Road,
wineingbutchernh.com

FOOD TRUCKS**Flame Mobile Pizza**

flamemobilepizza.com

Kona Ice of NH

kona-ice.com

No Kidding Coffee

nokiddingcoffee.com

Pours & Petals Events

poursandpetalsevents.com

ProScoops LLC

1009 Upper City Road, Pittsfield,
facebook.com/profile.php?id=100069018947855

OUTDOOR DINING

May through October, Concord restaurants extend their dining space onto the sidewalks, squares and occasional parking spots in the city's downtown. Outdoor dining became popular in 2020, but has become a permanent facet of summer life in New Hampshire's Capital City. Enjoy a refreshing drink, burger, or multi-course meal while taking in the sights of the beautiful historic downtown. Main Street is lined with trees, gardens and sculptures, and is the perfect atmosphere for an outdoor meal.

Fairs & festivals

A year's worth of events to mark on your calendars

49th Annual Market Days Festival

June 22-24, 2023

Hosted by Intown Concord in downtown Concord

22nd Annual Powwow

July 8-9, 2023

Mt. Kearsarge Indian Museum, Warner

Crayon 301 NASCAR Cup Series Race

July 16, 2023

New Hampshire Motor Speedway, Loudon

41th Annual Hot Air Balloon Rally

August 4-6, 2023

Drake Field, Pittsfield

Hopkinton State Fair

August 31-September 4, 2023

392 Kearsarge Ave, Contoocook

Aerospacefest

September 16, 2023

McAuliffe-Shepard Discovery Center, Concord



Aaron Baker Mulberry Creek Imagery

Smarika Darji performs a traditional Nepali dance at the Concord Multicultural Festival.



ST. PAUL'S SCHOOL

PROUD MEMBER OF THE
CONCORD COMMUNITY

www.sps.edu



@StPaulsSchoolNH

NE-411692

Concord Multicultural Festival
Sunday, September 24, 2023
 Keach Park, Concord

Blues, Brews & BBQ
September 30, 2023
 Hosted by Concord Coalition to End Homelessness at Bank of NH Stage, Concord

Upstairs Downtown Walking Tour
September 14, 2023
 Hosted by Intown Concord in downtown Concord

Warner Fall Foliage Festival
October 7-8, 2023
 Downtown Warner

Halloween Howl
October 27, 2023
 Hosted by Intown Concord in downtown Concord

Midnight Merriment
December 1, 2023
 Hosted by Intown Concord in downtown Concord

Concord NH Winter Festival
January 26-27, 2024
 Hosted by Intown Concord and The Hotel Concord in downtown Concord

Black Ice Pond Hockey Tournament
January 26-28, 2024
 White Park, Concord



Photo by Bill Graham / Witch City Images

The Annual Market Days Festival, presented by Intown Concord, features live entertainment, delicious food, and fantastic shopping.

Capital City Craft Festival
April 6-7, 2024
 Hosted by Castleberry Fairs at Everett Arena, Concord

Farmers Markets
 Concord Farmers Market takes place on Saturdays in May through October from 8:30 a.m. to noon. Learn more at concordfarmersmarket.com. The Downtown Concord Winter Farmers Market takes place November through April from 9 a.m. to noon at 7 Eagle Square, behind the clock tower. Learn more at downtownconcordwinterfarmersmarket.com.

Concord Arts Market
 Summer arts markets will be held in

Rollins Park on June 3, July 15, August 19, September 16 and October 21, 2023. Visit concordartsmarket.net for more information.

Live outdoor music
 During the summer months, the Concord Parks and Recreation Department and the Concord Public Library host free outdoor concerts at various locations throughout the city. Many local restaurants, breweries, and hotels like the Courtyard by Marriott present their own schedules of outdoor concerts. Sidewalk performers are frequently spotted downtown, and almost every day in Concord is filled with events, music, and things to do.



Concord Young Professionals Network (CYPN) hosts monthly networking events at local businesses like Teatotaler.

Emerging leaders

Young leaders build community in Concord

There has been a significant migration of young people to New Hampshire in recent years. 2020 U.S. Census data reported that New Hampshire has had a steady influx of migrants from other states since 2015, with the largest demographic growth in adults ages 18-30. In a 2023 survey led by Stay, Work, Play New Hampshire, Inc., young people gave their top reasons for choosing New Hampshire as home: recreation, safety, outdoors, and the environment. Concord has all the assets of a capital city while being surrounded by forests, mountains, and beautiful lakes and rivers.

One of Greater Concord's best resources for young people is the Concord Young Professionals Network (CYPN). CYPN began as a professional and personal development initiative of the Greater Concord Chamber of Commerce that is free for all to join. In a typical year, CYPN hosts 20+ events, including networking events at rotating locations, a nonprofit night that connects young professionals with volunteer op-


portunities, and a wellness series focusing on topics from financial planning to mental health, family-friendly hikes and more.

CYPN empowers young people to make a difference in the community. Each month, they cook dinner for families facing food insecurity at The Friendly Kitchen, support countless community events, and have organized opportunities for young people to meet with state legislators — an easy feat in the Capital City! In New Hampshire, it's simple to contact civic leaders and testify at the New Hampshire State House, and young residents in Concord know that their voices are heard when they can meet face-to-face with their representatives. CYPN fosters a leadership mindset where young people in the organization have gone on to run for office, serve on prominent nonprofit boards and start their own businesses.

From vintage fashion, to home goods, to video production, young entrepreneurs have shaped Concord's Main Street and become an integral part



of the Capital City. In June 2022, Emmett Soldati opened Teatotaler on Main Street in downtown Concord. This "queer, hipster oasis of tea, coffee, and pastry goodness" is easily recognized by its bright pink storefront. It's no surprise that Teatotaler was named a "Most Instagrammable Restaurant in America" by Food Network Magazine — the interior is filled with colorful murals, quirky table signs, and fresh pastry. Teatotaler is well-known for their boba bubble tea, handmade pastries (including gluten-free, dairy-free, vegan, and vegetarian treats), and "Chai Curious" tea blends. The café also hosts community events, including drag shows, live music, and much more. Soldati was drawn to open his café in Concord because of the supportive business community; his story is just one of many where Concord has given an enthusiastic welcome to young entrepreneurs. The Capital City continues to grow and thrive because of its dynamic community of young professionals. Learn more at concordnhchamber.com/cypn.

**7,000 Square Feet
Of Unique Treasures**



**CONCORD
ANTIQUES**

Open: Mon - Sat: 10-6 • Sun: 11-5
137 Storrs Street, Concord, NH
603.225.6100
www.ConcordAntiquesGallery.com

Local Decision-Making, Local Lending



**Home Mortgages
Construction Loans
Home Equity Loans
Refinancing**

FULL SERVICE BANKING



**Sugar
River
Bank**
Est. 1895

Apply online: sugarriverbank.com/loans/mortgage

**198 Loudon Road, Concord, NH
603.227.6020 | sugarriverbank.com**
Newport | Warner | New London | Sunapee | Grantham

Member FDIC | Equal Housing Lender 

**Making
MEMORIES
easier.**




Nonstop flights & hassle-free travel.

FlyManchester.com

Merrimack Valley

An Orientation to the Region

GRANITE STATE FACTS

With an area of 9,350 square miles, New Hampshire is bordered by Massachusetts, Maine, Vermont, the Canadian province of Quebec and the Atlantic Ocean. The state's highest point is Mt. Washington in the Presidential Range of the White Mountains at 6,288 feet; the lowest point is sea level. New Hampshire's state bird is the purple finch, the state flower is the purple lilac and the state fruit is the pumpkin.

CITY OF CONCORD 67.19 square miles
TIME ZONE Eastern
AREA CODE 603

CLIMATE

AVERAGE TEMPERATURE IN JANUARY (Coldest Month) 22
AVERAGE TEMPERATURE IN JULY (Warmest Month) 71
AVERAGE ANNUAL TEMPERATURE 47
AVERAGE ANNUAL PRECIPITATION 44 inches
AVERAGE ANNUAL SNOWFALL 62 inches
ELEVATION (at State House in downtown Concord) 284 feet

LOCATION

Situated on the Merrimack River and the juncture of three inter-states (I-89, I-93 and I-393), Concord is conveniently located 18 miles north of the state's largest city, Manchester, and 70 miles north of Boston.

TRANSPORTATION

City Bus System

Concord Area Transit (CAT) provides bus service to and from downtown Concord and surrounding points, including Penacook, Concord Hospital, Steeplegate Mall, NHTI-Concord's Community College and Walmart. Buses operate Monday through Friday. For a complete schedule and ticket information, visit concordareatransit.org or call (603) 225-1989.

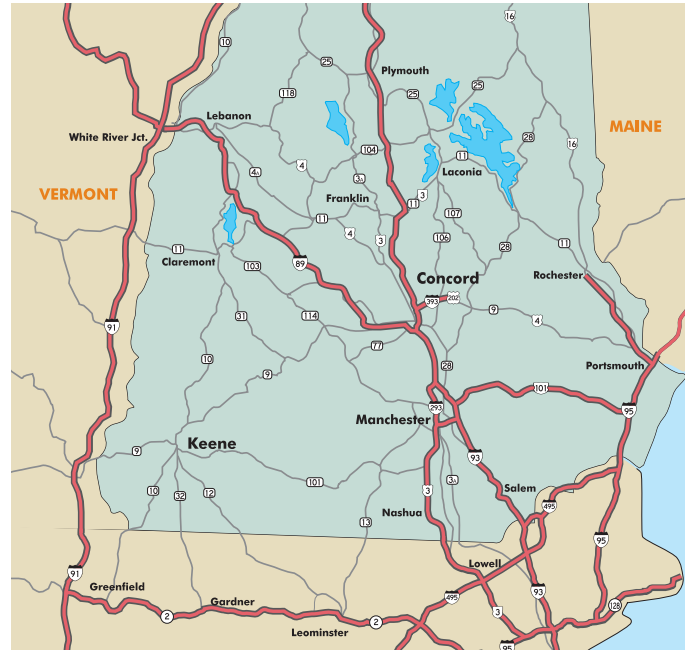
Intercity Bus Service

Concord Coach Lines, Inc. offers transportation to destinations from Boston to the Lakes Region to the White Mountains. Passengers enjoy safe, reliable service and great amenities—charging ports, free Wi-Fi, movies and more. For schedules and ticket information, visit concordcoachlines.com or call 1-800-639-3317.

Airports

■ Concord Municipal Airport, a 614-acre general aviation facility, welcomes corporate and private flyers. The airport features FAA Flight and Commerce Department Weather Service Stations and two runways (6,005-feet and 3,200-feet in length), capable of serving large aircraft including Boeing 727s. Concord Aviation Services provides flight training, rentals, maintenance, fuel, and concierge service that includes local transportation. For more information, visit concordnh.gov or call (603) 228-2267.

■ Conveniently located just 20 miles south of Concord, Manchester-Boston Regional Airport offers travelers jet service by American, Avelo, Southwest, Spirit and United to major cities throughout the United States. For more information, visit fly-manchester.com or call (603) 624-6539.



LOCAL HOTELS, MOTELS AND CONFERENCE CENTERS

View additional options for corporate events by visiting the online Membership Directory at concordnhchamber.com.

Best Western Concord Inn & Suites

97 Hall St. Concord; bestwestern.com

The Centennial Hotel

96 Pleasant St., Concord; thecentennialhotel.com

Colby Hill Inn/The Grazing Room

33 The Oaks St., Henniker; colbyhillinn.com

The Comfort Inn

71 Hall St., Concord; choicehotels.com

Courtyard by Marriott/Grappone Conference Center

70 Constitution Ave., Concord; marriott.com

Fairfield Inn and Suites By Marriott

4 Gulf St., Concord; concordfairfieldinn.com

Holiday Inn

172 North Main St., Concord; ihg.com/hotels

The Hotel Concord

11 South Main St., Concord; hotelconcordnh.com

Residence Inn by Marriott

91 Hall St., Concord; residenceinnconcord.com

TRU by Hilton Concord

406 South Main Street, Concord; hilton.com

CABINS

Getaway House

76 Mountain Rd., Epsom; getaway.house

Area's Leading Employers

A sampling of top employers in Greater Concord, listed by approximate number of employees

State of New Hampshire	nh.gov	10,000	Government	Community Action Program	capbm.org	300	Social Services
Capital Region Health Care	concordhospital.org	4,700	Health Care	Market Basket	shopmarketbasket.com	300	Supermarket
Southern NH University	snhu.edu	2,090	Education	Pats Peak Ski Area	patspeak.com	300	Recreation
Eversource	eversource.com	1,400	Energy	Unitil	unitil.com	300	Utility
Concord School District	sau8.org	1,120	Education	Concord Group Insurance Co.	concordgroupinsurance.com	280	Insurance
Consolidated Communications	consolidated.com	1,050	Utility	Banks Chevrolet-Cadillac, Inc.	banksautos.com	270	Auto Dealer
Associated Grocers of NE	agne.com	980	Grocery Wholesaler	Dartmouth Health Concord	dartmouth-hitchcock.org	240	Health Care
Merrimack County	merrimackcounty.net	820	Government	Elektrisola, Inc.	elektrisola.com	240	Manufacturer
Community College System of NH	ccsnh.edu	800	Education	Concord Orthopaedics, PA	concordortho.com	230	Health Care
GE Aviation	geaviation.com	800	Manufacturer	NH Distributors, Inc.	nhdist.com	230	Distribution
Osram Sylvania	osram.us	720	Manufacturer	Duprey Companies	dupreycompanies.com	220	Hotels/Management
Coca-Cola Beverages Northeast	cokenortheast.com	700	Distribution	Hannaford	hannaford.com	220	Retail
Granite State Independent Living	gsil.org	600	Disability Support	Pleasant View Retirement	genesishcc.com	210	Retirement
New Hampshire Hospital	dhhs.nh.gov	600	Mental Health	Casella Resource Solutions	casella.com	200	Waste Management
Merrimack Valley School District	mvsdpd.org	530	Education	Northeast Delta Dental	nedelta.com	190	Insurance
City of Concord	concordnh.gov	510	Government	Concord Direct	concorddirect.com	160	Printing
Community Bridges	communitybridgesnh.org	500	Disability Support	Encompass Health Rehab.	encompasshealth.com	160	Health Care
Genesis Elder Care	genesishcc.com	500	Healthcare	NH Motor Speedway (seasonal)	nhms.com	160	NASCAR Racetrack
Watts Regulator	watts.com	500	Manufacturer	R.S. Audley, Inc.	audleyconstruction.com	160	Construction
New England College	nec.edu	470	Education	Granite State Credit Union	gscu.org	140	Credit Union
NHTI-Concord's Community College	nhti.edu	440	Education	Home Depot	homedepot.com	140	Retail
Anthem Blue Cross Blue Shield	anthem.com	430	Insurance	Home Instead Senior Care	homeinstead.com	140	Health Care
Riverbend Community Mental Health	riverbendcmhc.org	420	Mental Health	Hutter Construction Corp.	hutterconstruction.com	130	Construction
Walmart Supercenter	walmart.com	410	Retail	DHL Supply Chain	dhl.com	120	Distribution
Granite Visiting Nurses Association	granitevna.org	400	Health Care	Engelberth Construction, Inc.	engelberth.com	120	Construction
McLane Northeast/Concord	mclaneco.com	340	Distribution	Epsom Healthcare Center	nhccare.com	120	Health Care
Grappone Automotive Group	grappone.com	330	Auto Dealer	Merrimack County Savings Bank	themerrimack.com	120	Bank
Havenwood-Heritage Heights	hhinfo.com	330	Retirement	Cummings Printing Company	cummingsprinting.com	100	Printing
Pitco Frialator, Inc.	pitco.com	330	Manufacturer	Presidential Oaks	presidentialoaks.org	100	Health Care
St. Paul's School	sps.edu	330	Education	Ross Express, Inc.	rossexpress.com	100	Distribution
Globe Manufacturing	globe.msasafety.com	320	Manufacturer	NHHEAF Network Organizations	nhheaf.org	100	Education Finance
Sanel NAPA	sanelnapa.com	310	Auto Parts	UNH Franklin Pierce School of Law	law.unh.edu	100	Education

COMMERCIAL PROPERTY REAL ESTATE & PROPERTY MANAGEMENT

**BETTER HOMES & GARDENS-
THE MASIELLO GROUP**
(603) 228-0151; masiello.com

CAPITAL COMMONS, LLC
(603) 422-0822;
class-a-properties.com

CIBOROWSKI ASSOCIATES
(603) 225-7737

**COLLIERS INTERNATIONAL
IN NEW HAMPSHIRE & MAINE**
(603) 623-0100; colliers.com/en/
united-states/cities/new-hampshire

CONCORD BUSINESS CENTER
(603) 224-5115;
concordbusinesscenter.com

CONCORD COMMERCIAL REAL ESTATE
(603) 731-5000; concordcommercial.biz

FAIRWAY REAL ESTATE, LLC
(603) 227-0233

**FOX FIRE PROPERTY
MANAGEMENT, INC.**
(603) 228-2151; foxfirenh.com

INEX PROPERTIES
(603) 665-6153; inex.com

INTERCHANGE DEVELOPMENT, LLC
(603) 783-0400; merchants-way.com

JOHN FLATLEY COMPANY
(781) 917-5306; johnflatleyco.com

KEELER FAMILY REALTORS
(603) 225-3353; keelerfamily.com

**NEW HAMPSHIRE
BUSINESS SALES, INC.**
(603) 715-1097; nhbizsales.com

NORTON ASSET MANAGEMENT, INC.
(603) 625-9628;
nortonnewengland.com

PREMIERE PROPERTIES, INC.
(603) 224-3373; ppi-nh.com

REI SERVICE CORPORATION
(603) 645-6450; reiservice.com

SUNBELT BUSINESS BROKERS OF NH
(603) 745-9290; sunbeltnh.com

*This list is a sampling of the area's
commercial real estate and property
management companies.

THE BREAKDOWN

Up Close

Facts and figures about Concord and surrounding towns

Surrounding Concord are 15 communities, each with their own distinctive character, recreational features and lifestyle options. Get to know Greater Concord with this town-by-town snapshot. Read about each town starting on Page 26

	CONCORD	ALLENSTOWN	BOSCAWEN	BOW	CANTERBURY	CHICHESTER	DUNBARTON	EPSOM
Population	44,006	4,772	3,978	8,383	2,449	2,737	3,080	4,916
Land Area (square miles)	67.49 (includes Penacook)	20.4	24.9	28.2	43.9	21.2	30.8	34.5
Population Density	688	233.1	160	297.6	55.7	129.2	99.9	142.6
Tax Rate	Concord: \$25.89 Penacook: \$29.13	\$31.50	\$28.38	\$25.49	\$20.51	\$23.10	\$23.41	\$23.64
Assessment Ratio	95.5%	76.5%	85.1%	75.8%	92.5%	82.8%	77.2%	85%
Total Households	18,810	1,839	1,571	2,756	1,018	1,060	1,055	1,903
Median Household Income	\$70,004	\$57,601	\$80,531	\$125,078	\$98,125	\$99,583	\$130,298	\$96,840
City/Town Office	41 Green St. (603) 225-8500 Hours: M,T,W,F, 8-4:30, Th, 8-6; City Manager: Thomas J. Aspell, Jr. (603) 225-8570 Clerk: Janice Bonenfant Mayor: James Bouley concordnh.gov	16 School St. (603) 485-4276 Hours: M-Th 8:30-4:30; Administrator: Derik Goodine allenstownnh.gov	116 N. Main St. (603) 753-9188 Hours: M-W 8:30-4:30; Th 8:30-5:30; Town Clerk: Nicole Hoyt townofboscawen.org	10 Grandview Rd. (603) 223-3910 Hours: M-F, 7:30-4; Manager: David L. Stack bownh.gov	10 Hackleborough Road (603) 783-9955 Hours: M,W, 9-3; T,Th, 12-7 Administrator: Ken Folsom canterbury-nh.org	54 Main St. (603) 798-5350 Hours: M,W,Th, 8-3:30; T, 8-7; Administrator: Jodi Pinard chichesternh.org	1011 School St. (603) 774-3547 Hours: M-Th, 8-4; Town Clerk: Linda L. Landry dunbartonnh.org	940 Suncook Valley Hwy. (603) 736-4825 Hours: M, 8-1 & 4-6; T, 10-3; Th & F, 8-3; Clerk: Laura Searbo epsomnh.org
Fire Department; Emergency 911	24 Horseshoe Pond Lane, (603) 225-8650 Chief: John Chisholm	1 Ferry St. (603) 485-9202 Chief: Eric Lambert	15 High St. (603) 796-2237 Chief: Timothy Kenney	7 Knox Road 223-3960 Chief: Eliot Berman	26 Baptist Road (603) 783-4798 Chief: Michael Gamache	22 Main St. (603) 798-5954 Chief: Alan Quimby	18 Robert Rogers Rd. (603) 774-3542 Chief: Jonathan Wiggins	1714 Dover Rd. (603) 736-9291 Chief: R.Stewart Yeaton
Police Department; Emergency 911	35 Green St. (603) 225-8600 Chief: Bradley C. Osgood	40 Allenstown Rd. (603) 485-9500 Chief: Michael Stark	116 N. Main St. (603) 753-9124 Chief: Jason Killary	7 Knox Road (603) 223-3950 Chief: Kenneth Miller	26 Baptist Road (603) 783-0433 Chief: Michael Labrecque	22 Main St. (603) 798-4911 Chief: Joshua Wright	18 R. Rogers Rd. (603) 774-5500 Chief: Christopher Remillard	980 Suncook Valley Hwy. (603) 736-9624 Chief: Brian Michael
Post Office	18 Loudon Road (603) 225-0004 M-F, 7:30-6; Sat, 9-1 ZIP: 03301	Mail through: Pembroke; ZIP: 03275	Mail through: Concord ZIP: 03303	Mail through: Concord ZIP: 03304	3 Center Road (603) 783-4158 M-F, 10-12:30; 1:30-5; Sat, 8:30-12; 03224	Mail through: Epsom ZIP: 03258	Mail through: Goffstown ZIP: 03046	948 Suncook Valley Hwy. (603) 736-9302 M-F, 8-5; Sat, 8:30-12; ZIP: 03234



HENNIKER	HOPKINTON	LOUDON	PEMBROKE	PITTSFIELD	SALISBURY	WARNER	WEBSTER
5,827	6,036	5,714	7,482	4,140	1,465	2,953	1,957
44.1	43.3	46	22.6	24.1	39.8	55.2	28.2
132.1	133.1	124.2	330.5	171.6	37	53.5	69.2
\$32.56	\$30.87	\$19.20	\$24.00	\$23.99	\$23.75	\$26.31	\$22.29
79.9%	88.3%	85.2%	77.6%	79.6%	89.2%	83.7%	89.5%
2,024	2,446	2,257	2,852	1,937	716	1,476	891
\$83,538	\$92,667	\$75,493	\$89,000	\$57,277	\$84,293	\$65,500	\$88,179
18 Depot Hill Road (603) 428-3221 Hours: M,W,F, 8-4; T, 10-6; Administrator: Diane Kendall henniker.org	330 Main St. (603) 746-8242 Hours: M-T, 8-5; W, 12-4; Th,F, 8-12; Administrator: Neal Cass hopkinton-nh.gov	55 S. Village Rd. (603) 798-4542 Hours: M, 8-4; T, 8-8:45; W,Th, 8-4 Clerk: Ashley Simonds loudonnh.org	311 Pembroke St.; (603) 485-4747 Hours: M-F, 8-4:30 Administrator: David Jodoin pembroke-nh.com	85 Main St. (603) 435-6773 Hours: M, 11-7; W, 1-4; T, Th,F, 8-4 Town Administrator: Cara M. Marston pittsfieldnh.gov	9 Old Coach Road (603) 648-6322 Hours: M, 8-1; T, 3:30-8:30 Town Clerk: Jim Zink-Mailloux salisburynh.org	5 E. Main St. 456-2298 Hours: M,Th, 8-4; T, 8-6; W, 9-4 Town Clerk: Michele Courser warner.nh.us	945 Battle St. (603) 648-2272 Hours: M,W,F, 9-4; Town Administrator: Dana Hadley webster-nh.gov
216 Maple St. (603) 428-7552 Chief: Jim Morse	9 Pine St.; Contoocook (603) 746-3181 Chief: Jeff Yale	8 Cooper St. (603) 798-5612 Chief: Tom Blanchett	247 Pembroke St. (603) 485-3621 Chief: Paul Gagnon	33 Catamount Rd. (603) 435-6807 Chief: Peter J. Pszonowsky	273 Old Turnpike Road (603) 648-2540 Chief: William MacDuffie, Jr.	148 W. Main St. (603) 456-2222 Chief: Jonathan France	851 Battle St. (603) 648-2500 Chief: Emmett Bean, Sr.
340 Western Ave. (603) 428-3213 Chief: Matt French	1696 Hopkinton Road; 746-5151 Chief: Thomas J Hennessey	8 Cooper St. (603) 798-5521 Chief: Kristoffer Burgess	247 Pembroke St. (603) 485-9173 Chief: Gary Gaskell	59 Main St. (603) 435-7535 Chief: Joe Collins	NH State Police (603) 648-2230	180 W. Main St. (603) 456-3433 Chief: William Chandler	851 Battle St. (603) 648-2200 Chief: Stephen Adams
10 Post Office Pl. (603) 428-3285 Hours: M-F, 8:30-5; Sat, 9-12; ZIP: 03242	129 Park Ave. Contoocook 746-3980, M-F, 8:30-5; Sat, 8:30-11:30; ZIP 03229	Mail through: Concord ZIP: 03307	55 Glass St. (603) 485-3127 M-F, 8:30-5; Sat, 8:30-12; ZIP: 03275	2 Elm St. (603) 435-6281 Hours: M-F, 8-5; Sat, 8-12; ZIP: 03263	269 Old Turnpike Rd. (603) 648-2598 M-F, 7-11:45 & 2-4:45; Sat, 7-11:45; 03268	36 E. Main St. (603) 456-3524 M-F, 8-12 & 1-5; Sat, 8:30-12; ZIP: 03278	Mail through Concord ZIP: 03303



The Suncook Valley Rotary Club hosts an epic Hot Air Balloon rally in Pittsfield each year. Learn more about the region's fairs and festivals on Page 18.

The Towns

Charm and convenience

While each town surrounding Concord is distinctly different from its neighbors, all share a rural New England feel. There is much for residents, employers and visitors to treasure about the community spirit, low crime rate, quiet lifestyle, picturesque countryside and grassroots-style government of the area.

ALLENSTOWN

Allenstown combines a rural feel with many conveniences typically found in larger cities. Following a business tax exemption approved by voters in 2018, the town experienced an economic revival led by a motivated Economic Development Committee. Allenstown has a public library, several churches, the New Hampshire Snowmobile Museum and a community center housing a Boys and Girls Club, senior center, basketball court and a playground. Canoe and kayaking fans enjoy access to the Suncook River and a boat launch on the Merrimack. Outdoor enthusiasts love Bear Brook State Park, the largest developed state park in New

Hampshire, with nearly 10,000 acres to explore. Activities include hiking, mountain biking, horseback riding, swimming, fly fishing, snowshoeing, cross-country skiing, snowmobiling and rifle hunting.

BOSCAWEN

This residential riverside community is home to the New Hampshire State Veterans Cemetery and is the seat of county services for Merrimack County. The Jamie Welch Memorial Park features access to the Northern Rail Trail, tennis courts, ball fields, picnic areas, a playground and a boat ramp for the Merrimack River. Historic sites include the Gerrish Station, Hannah Dustin Memorial, 1913 Library and the Boscawen Historical Society.

BOW

Incorporated in 1727, Bow is a vibrant community and among the fastest-growing towns in Merrimack County. Its excellent schools and recreational facilities include five

multi-purpose fields, an extensive trail system, playgrounds, an active community center and popular sliding hill, outdoor tennis courts, indoor sports center with soccer fields, and an outdoor skating rink. Bow has an active heritage commission, garden club, Rotary Club, snowmobile club and Boys and Girls Scouts.

CANTERBURY

Canterbury's rolling fields and forested land provide a beautiful setting for Canterbury Shaker Village, a living tribute to more than 200 years of the Shakers' gentle way of life. The town's traditional bandstand on the town green, its Colonial homes, and a flourishing arts community make this a picturesque New England village. Golfers will enjoy Canterbury Woods Country Club, an 18-hole, public golf course. Community organizations include the historical society, 4-H Club, snowmobile club and Boys and Girls Scouts.

CHICHESTER

Chichester is a traditional rural town affording residents an easy five-minute commute to Concord and easy routes to Hooksett or Manchester. In addition to Boy Scouts and a historical society, the town has an active recreation commission that organizes an Old Home Day every August.



Photo by Colby Hill Inn / The Grazing Room

Nestled in the scenic town of Henniker, Colby Hill Inn / The Grazing Room offers a unique culinary experience that combines global cuisine with a commitment to local and sustainable farming practices.

Serving Greater New England since 1987

Starving Artists Movers

First class moves • Professional packing • Warehouse storage
A commitment to extraordinary hands-on customer service
And a soft spot for our home town

603.228.5665
www.starvingartistsmovers.com

Educating Grades R-8

STRONG FOUNDATIONS

CHARTERED PUBLIC SCHOOL

Strong Foundations...
 Today a reader,
 Tomorrow a leader

- Academically Rigorous
- Enrichment
- Core Virtues

No Tuition for NH Residents
 715 Riverwood Dr.,
 Pembroke, NH
 3/10 mile south of Concord/
 Pembroke line

Email: info@sfnh.org 603-225-2715 Website: www.sfnh.org

Come share a touch of country with us!
 Seasonal fruit and vegetables ripen Mid June to Mid November

Apple Hill Farm

580 Mountain Rd., Concord, NH
 Farmers -Chuck & Diane Souther

Berries, Tree Fruit and Vegetables
 (603) 224-8862
www.applehillfarmnh.com

Summer & Fall Seasonal Farm Stand
 Visit our website for all the latest updates and picking times.

Only a short drive from downtown Concord

PICK YOUR OWN

NE-410792

Always on the air
Always online
Always on demand
Always on the beat
Always on your mind
Always on.

nhpr News from New Hampshire and **npr**
 89.1 Concord/Manchester | nhpr.org



Concord Monitor

Henniker Community School holds an annual Halloween Parade through town.

DUNBARTON

Historic Dunbarton is the very center of the six New England states. It's a residential community, rich in conservation land, ponds, hiking trails and 8.7 miles of the General John Stark (father of our state motto, "Live Free or Die") Scenic Byway. Dunbarton celebrates Old Home Day and still holds traditional town meetings on the second Tuesday in March. The Dunbarton Historical Society's blacksmith shop, schoolhouse and cobbler shop — which is completely outfitted as a working shop — can be seen while traveling along the Scenic Byway.

EPSOM

Epsom is a growing residential and commercial community with close proximity to Concord. The historic home of Major Andrew McClary, who died while leading his troops at Bunker Hill during the American Revolution, still stands in the town. In addition to the Old Home Day festival each August and an old-time variety show each autumn, the town sponsors an active athletic association at the local school.

HENNIKER

As "The Only Henniker on Earth," this town may well be New Hampshire's best-kept secret. With its breathtaking natural resources, covered bridge, arts, rich history and cultural activities, Henniker is a destination for everyone. Home to both New England College and Pats Peak Ski Area, Henniker offers countless recreational and educational opportunities and is complemented by quaint stores and craft shops. Located on the Con-

toocook River, Henniker is home to nationally renowned white-water rapids and convenient boat launches for boating and fishing enthusiasts.

HOPKINTON / CONTOOCCOOK

The town's business center, Contoocook, is home to the oldest surviving covered railroad bridge in the world, a restored railroad station and bandstand, and the home of Civil War hero Commodore George Hamilton Perkins. The village is bustling with a number of family-owned retail businesses, restaurants, gift and clothing boutiques, and art and antique stores. The Contoocook River offers water recreation, and nearby George's Park has areas for baseball, softball, basketball, tennis and a skateboard park. The town hosts a State Fair each September, and there are many athletic fields, a large town library and the Slusser Senior Center. Historic Hopkinton's Main Street is lined with lovely Colonial homes and a traditional town hall, which once served as the state Capitol.

LOUDON

Named for Scottish soldier John Campbell, the fourth Earl of Loudon, the town was chartered in 1773 when it separated from Canterbury. Located 8 miles northeast of Concord, Loudon is best known as the home of New Hampshire Motor Speedway, New England's largest sports facility, and New England Racing Museum. Recreational opportunities include Loudon Country Club, a private campground, a town beach and summer programs for area children.

Staff satisfaction survey scores us a 9.4 out of 10!



It's A Great Place To Work
Our long-term care employees are truly dedicated professionals who take pride and find great reward in caring for our residents.

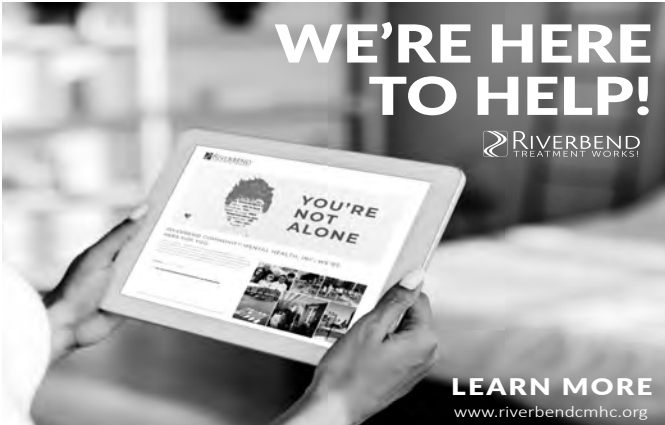
Retirement Living ~ Assisted Living ~ Skilled Nursing ~ Rehabilitation

Presidential Oaks
better senior living

200 Pleasant Street, Concord NH
PresidentialOaks.org

For a Personal Tour or Admissions Questions: 603-724-6100

WE'RE HERE TO HELP!



RIVERBEND TREATMENT WORKS

LEARN MORE
www.riverbendcmhc.org

PEMBROKE

Pembroke was an industrial center for much of the 19th and 20th centuries. The Suncook and Soucook rivers flow through the town, attracting outdoor enthusiasts for fishing, kayaking and sculling. Trails and natural areas offer hiking, snowmobiling and cross-country skiing. Pembroke is also home to the Pembroke Pines Country Club. Over the last decade, Pembroke has seen tremendous growth, but has retained its country charm with annual events such as Old Home Day and Christmas in the Village.

PENACOOK

Penacook Village is the only neighborhood in Concord that has its own community center, historical society and village association. Traditional events include the annual holiday tree lighting in the town square, the Halloween parade, and a summer afternoon of music by the river. Penacook is uniquely situated with access to the Contoocook and Merrimack rivers, offering canoeing and kayaking opportunities. The downtown is welcoming and walkable, with quaint, unique shops. Penacook prides itself on being a close-knit community with many small businesses.

PITTSFIELD

Located in the heart of the Suncook



Concord and the surrounding region features lush countryside, and plenty of local farms. Sunfox Farm, pictured here, hosts an annual Sunflower Bloom Festival. Learn more about the festival in Fairs and Festivals, beginning on Page 18.

Photo by Sunfox Farms

EXPERIENCE MATTERS SINCE 1966

The Rowley Agency building is a modern, two-story brick structure with large windows and a glass entrance. An American flag flies on a tall pole in front of the building. The building is surrounded by landscaping, including trees and shrubs. The sky is blue with some clouds.

THE ROWLEY AGENCY

INSURANCE • BONDS • BENEFITS

...an Assurex Global Partner

1-800-238-3840 | www.rowleyagency.com

Concord, NH • Portland, ME • Bennington, VT • West Lebanon, NH

Valley, Pittsfield's origins stem from the textile manufacturing industry. The town's business community is blended with many registered historical sites and walking trails. Locals enjoy activities like Winterfest, Old Home Day and a yearly hot-air balloon rally organized by the local Rotary Club. The town has an active baseball and soccer program, a public swimming area with swimming lessons, and a summer youth program at the municipal Drake Field.

SALISBURY

Historic Salisbury is located 18 miles northwest of Concord. Among the first settlers was Ebenezer Webster, father of the statesman Daniel Webster, who was born in Salisbury in 1782. The town's signature buildings include Academy Hall (an old one-room schoolhouse which is now the town offices), the Salisbury Free Library, the Baptist Church, the original town hall and many fine period homes. Residents have built a close-knit community, thanks to groups such as the Boy Scouts, Salisbury Congregational Community Church, 4-H, Salisbury Historical Society, Friends of the Library, Salisbury Boosters and Ladies Aid group.

WARNER

Nestled at the foot of Mt. Kearsarge is the quaint New England village of Warner. The town is home to Rollins State Park, Mt. Kearsarge Indian Museum and two restored covered bridges over the Warner River, a favorite for canoeing. Its proximity to I-89 makes it attractive for commuters to Concord, Manchester and the Hanover / Lebanon region. The 120-year-old Pillsbury Free Library offers more than 25,000 books, videos, music and periodicals. Many artists, writers, poets and crafts-people live in the area, and each year the town holds its Warner Fall Foliage Festival.

WEBSTER

Webster is a residential community with beautiful old farms and expansive fields. The town is home to the Blackwater Dam, a U.S. Army Corps of Engineers recreational area. The Blackwater River is used for world-class whitewater kayaking competitions. Other recreational areas include town-owned ball fields, a playground and a private campground. The town hosts an active grange and Old Home Day.

APARTMENT MANAGEMENT COMPANIES

Alliance Asset Management

105 Loudon Road, Unit 1;
(603) 223-0810; alliancenh.com

Catch Neighborhood Housing

105 Loudon Rd., Unit 1; (603) 225-8835;
catchhousing.org

Connect 55+ Concord

23 Triangle Park Drive; (603) 715-5040;
calamar.com/cobblestone-home

Elm Grove Property Management

440 Hanover St., Manchester;
(603) 666-8534; elmgrovecompanies.com

Foxfire Property Management

81 North Main St., 4th Floor;
(603) 228-2151; foxfirenh.com

The Hodges Companies

201 Loudon Road; (603) 224-9221;
hodgescompanies.com

Keystone Management Company, Inc.

99 Fisherville Road; (603) 228-3311;
keystonemanagement.com

Penacook Place Apartments

29 Pinehurst St.; (603) 753-0005;
penacookplaceapartments.com

White Rock Senior Living Community

6 Bow Center Road, Bow;
(603) 724-6250; summitpmg.com

DESIGN-BUILD • CONSTRUCTION MANAGEMENT • GENERAL CONTRACTING



**Our family has been
building for Concord
businesses for over 40 Years.**

Family owned and operated – offering a full suite of construction services for commercial and residential clients.



(603) 224-8583
jhspain.com

189 North Main St., Ste. 101
Concord, NH

Come Visit Us and Buy Local at the CONCORD FARMERS MARKET



**WE ARE ONE OF THE LONGEST
RUNNING MARKETS IN THE STATE**

May through October 2023

Saturday mornings

8:30AM - Noon

Capitol Street, Concord NH

www.concordfarmersmarket.com

- Fresh Seasonal Fruit & Vegetables
- Honey & Maple Products
- Specialty Foods
- Baked Goods
- Local Meats & Cheeses
- Wine & Ale

- Soaps & Herbs
- Seafood
- Pet Treats
- Plants & Flowers



LIKE US on



NE-414739



Photo by Ridgeline Studio

Beaver Meadow Golf Course is a pleasure for golfers of any skill level.

Itinerary

Things to do and see

VISITOR INFORMATION

Capital Region Visitor Center

49 South Main Street, Suite 104,
(603) 224-2508, concordnhchamber.com

The Chamber's Visitor Center is a great place to begin your visit! Find local and statewide travel and relocation information, brochures, maps, gifts, New Hampshire souvenirs and post-cards.

ARTS AND CULTURE

Bank of NH Stage

16 South Main Street, (603) 225-1111, banknhstage.com

The Bank of New Hampshire Stage, owned and operated by the Canterbury Shaker Village, is Concord's newest flexible arts venue. This unique performance space is a theatre, club, and stage for live music, complete with dazzling light displays.

Canterbury Shaker Village, Inc.

288 Shaker Road, Canterbury, (603) 783-9511, shakers.org
Canterbury Shaker Village is dedicated to preserving the 200-year legacy of the Canterbury Shakers. Enjoy guided tours, exhibits, craft demonstrations, family activities, workshops, special events and festivals, gardens, nature trails and more.

Capitol Center for the Arts

44 South Main Street, (603) 225-1111, canh.com

Experience live Broadway, comedy, music, and more in the historic vaudeville-era Chubb Theatre — New Hampshire's largest indoor theatre.

Concord City Auditorium

2 Prince Street, (603) 228-2793, theaudi.org

This historic municipal theater has hosted community-based arts and entertainment since 1904, typically presenting over 100 public events a year.

Concord Arts Market

Rollins Park, (603) 738-5931, concordartsmarket.net

An award-winning open-air market, showcasing the work of juried artisans and craftspeople.

Concord Dance Academy

26 Commercial Street, (603) 226-0200,

concorddanceacademy.com

Founded in 1981, CDA offers classes in tap, jazz, ballet, contemporary, lyrical, hip-hop and karate for beginner to advanced students.

Concord Community Music School

23 Wall Street, (603) 228-1196, ccmusicsschool.org

Founded in 1984, CCMS is a downtown destination for an inclusive musical community. This nationally recognized institution hosts over 100 concerts and events a year, and welcomes individuals of all ages, abilities and backgrounds to make music through private instruction, choruses and ensembles, therapeutic services and performance opportunities.

Concord Makerspace

197 North Main Street, Boscawen, (603) 565-5443,
concordmakerspace.org

Concord Makerspace is a shared workspace and makerspace with a woodshop, metal shop, prototyping, electronics, textiles and fiber arts workspaces. People of all levels of talent and skill can create, share, learn, collaborate and innovate.

Currier Museum of Art

150 Ash Street, Manchester, (603) 669-6144, currier.org

The Currier Museum of Art is an internationally renowned art museum featuring European and American paintings, decorative arts, photographs and sculpture, with exhibitions, tours and programs year-round.

Hatbox Theatre

270 Loudon Road, Suite 1161, (603) 715-2315, hatboxnh.com

Experience live performances like never before in an intimate 92-seat theatrical space. Avant-garde programming includes plays, poetry, improv, comedy, magic and more.

Kimball Jenkins, Inc.

266 North Main Street, (603) 225-3932, kimballjenkins.com

Kimball Jenkins is a community cultural center located in downtown Concord. The 3-acre campus is a historic estate with public gardens, and the art school offers a diverse variety of classes for adults, teens and children, including drawing, painting, print-making, ceramics and more.

League of NH Craftsmen

49 South Main Street, Suite 100, (603) 224-3375, nhcrafts.org

The League headquarters and education center features year-round gallery exhibits with educational programs and a permanent collection. Visit the League's retail gallery at 36 North Main Street.

Mt. Kearsarge Indian Museum

18 Highlawn Road, Warner, (603) 456-2600, indianmuseum.org

Located 20 miles northwest of Concord off I-89, the museum is known for its Native American exhibits and guided tours.

New Hampshire Historical Society

30 Park Street, (603) 228-6688, nhhistory.org

The New Hampshire Historical Society collects, preserves and interprets the materials of New Hampshire history. Their dynamic exhibits and programs engage tourists, scholars, genealogists and people of all ages.

The Palace Theatre

80 Hanover Street, Manchester, (603) 668-5588, palacetheatre.org

The Palace Theatre is a nonprofit performing arts center that hosts its own professional company, youth, and teen programs as well as presenting acts.

Red River Theatres, Inc.

11 South Main Street, (603) 224-4600, redrivertheatres.org

A nonprofit cinema showing the best of current independent and foreign films, classics, documentaries and cult favorites.

St. Paul's School

325 Pleasant Street, (603) 229-4800, sps.edu

St. Paul's School showcases work by both well-known and up-and-coming artists in its Crumpacker Gallery, as well as classical and contemporary dance through its venerated ballet company.

Strings & Things Music

113 South Main Street, (603) 228-1971,

stringsandthingsmusic.com

This family-owned independent music store offers merchandise, lessons, repairs, consignment, rentals, and community events.

SCIENCE AND NATURE

McAuliffe-Shepard Discovery Center

2 Institute Drive, (603) 271-7827, starhop.com

New England's premier air and space science center honors NH space pioneers Christa McAuliffe and Alan Shepard. The



Your Management Certificate.

1 Morning per Week. Year to Completion.

- ✓ Thursdays, 7–7:50 a.m.
- ✓ Zoom-based, year-round program
- ✓ Affordable tuition
- ✓ Financial aid available



Enrollment is now open – classes start soon!

Scan the code or email aconn@ccsnh.edu for details. **You Belong Here.**

45,000-square-foot McAuliffe-Shepard Discovery Center offers 20,000 square feet of interactive science and engineering exhibits, outdoor exhibits including a full-sized replica of a Mercury-Redstone rocket, a full-dome digital planetarium, an observatory, science store, café, portable digital planetarium and a full complement of on and offsite educational programs.

New Hampshire Audubon

84 Silk Farm Road, (603) 224-9909, nhaudubon.org

Protecting the state's natural environment for wildlife and for people, the Audubon provides educational programs for children and adults and protects thousands of acres of wildlife habitat. Explore their live animal exhibits, public trails and gift-shop.

New Hampshire Fish and Game Department Discovery Room

2 Hazen Drive, (603) 271-3211, wildlife.state.nh.us/discoveryroom

The Discovery Room features hands-on exhibits, educational games, and an aquarium with native fish.

Society for the Protection of NH Forests

54 Portsmouth Street, (603) 224-9945, forestsociety.org

This organization is dedicated to land protection, environmental education and forest management. Bring a picnic, hike along the Merrimack River on 90 acres of nature trails, enjoy exhibits in the award winning passive solar building and visit the gift shop.

FAMILY FUN

Altitude Trampoline Park Concord

270 Loudon Road, (603) 664-4444, altitudeconcord.com

All ages will enjoy the 35,000 square feet of indoor trampolines, foam pits, dunk lanes and a separate area for toddlers, parties and more.

Chuckster's Family Fun Park

9 Bailey Road, Chichester (603) 798-3555, chucksters.com

The Park features miniature golf, TimberTrek & Zipline, batting cages, go-karts, bumper boats, climbing wall, Klime Wallz, Jumpsters, Shoot-N-Shower, Aeroball, Volley Battle, Balloon Blast, Eliminator, 36 flavors of ice cream and more!

Scenic Railriders

188 Sewalls Falls Road, (603) 931-1700, scenicrailriders.com

Pedal the rails on a 6.4-mile scenic route along the Merrimack River. Advanced booking is required.

SPORTS

City of Concord Parks and Recreation Department

14 Canterbury Road, (603) 225-8690, concordnh.gov

The Parks and Rec department hosts youth baseball, basketball and soccer, along with organizing a variety of adult teams. The Douglas N. Everett Arena is open seasonally for ice skating and hockey; the rink is open for roller skating during the summer months.

New England Racing Museum

922 Route 106 N. Loudon, (603) 783-0813, nemsmuseum.com

This 10,000 square foot museum, located near New Hampshire Motor Speedway's South Entrance, houses some of the most unique and celebrated New England-themed racing memorabilia in the region.

New Hampshire Fisher Cats

1 Line Drive, Manchester, (603) 641-2005, nhfishercats.com

Professional minor league baseball; AA affiliate of the Toronto Blue Jays. New Hampshire Fisher Cats presents games and family entertainment from May to Labor Day.

New Hampshire Motor Speedway

Route 106, Loudon, (603) 783-4744, nhms.com





COMMUNITY ACTION PROGRAM
BELKNAP-MERRIMACK COUNTIES, INC.
EMPOWERING COMMUNITIES SINCE 1965

Our Mission

To provide assistance for the reduction of poverty, the revitalization of low-income communities, and the empowerment of low-income families and individuals to become or remain financially and socially independent.

Our Vision

An agency that creates opportunities for all people to thrive and a partner in building strong, resilient communities which promote a more equitable society.



603-225-3295 • www.capbm.org • PO BOX 1016, Concord, NH 03302

<https://www.linkedin.com/company/community-action-program-belnap--merrimack-counties-inc>

Community Action Program Belnap-Merrimack Counties, Inc.

Located 10 miles north of Concord, NHMS is New England's largest sports and entertainment facility, attracting tens of thousands of race fans annually to the Granite State. NHMS hosts the region's only NASCAR Cup Series event.

Pats Peak Ski Area & Banquet Center

686 Flanders Road, Henniker, (603) 428-3245, patspeak.com
Pats Peak has 28 trails, 11 lifts, 3 terrain parks, a snowtubing park, and night skiing.

GOLF COURSES

Beaver Meadow Golf Course (Public)

1 Beaver Meadow Street, Concord, (603) 228-8954, bmgc.golf
Canterbury Woods Country Club (Public)
15 West Road, Canterbury, (603) 783-9400, canterburywoodsccl.com

Concord Country Club (Private)

22 Country Club Lane, Concord, (603) 228-0232, concordcountryclub.org

Loudon Country Club (Public)

653 Route 106 North, Loudon, (603) 783-3372, loudoncc.com

Pembroke Pines Country Club (Public)

42 Whittemore Road, Pembroke, (603) 210-1365, pembrokepinescc.com

STATE PARKS

Bear Brook State Park

61 Deerfield Road, Allenstown, (603) 485-9874, nhstateparks.org
9,600 acres of heavily forested land offers a fitness course, nature center, swimming, picnicking, playing fields, archery ranges, canoe rentals, nature trails, hunting, fishing and the best mountain biking in the region.

Rollins State Park

1066 Kearsarge Mountain Road, Warner, (603) 456-3808
Located just outside downtown Warner, off Interstate 89, the park features hiking trails to the peak of Mt. Kearsarge. In the summer, an auto road takes visitors to within a quarter mile of the summit, where there are excellent views of Vermont and Boston.

HISTORIC SITES

A Walking Tour of Historic Downtown Concord

49 South Main Street, (603) 224-2508, visitconcord-nh.com
Enjoy this self-guided downtown walking tour of more than 50 historic sites, including the State House, Historical Society, Eagle Hotel, Phenix Hall, Upham-Walker House and the State Library. Brochures are available at the Greater Concord Chamber of Commerce (\$2) or can be accessed online.

Franklin Pierce Homestead

301 2nd NH Turnpike, Hillsboro, (603) 478-3165, nhstateparks.org
Home of the 14th President of the United States, from his infancy until his marriage in 1834. Built by Pierce's father in 1804, it reflects 19th-century affluent living.

Mary Baker Eddy Historic House

62 North State Street, (603) 225-3444, longyear.org
Tour a mid-19th century Greek revival house in downtown Concord, and learn about the life of an extraordinary American woman, Mary Baker Eddy, discoverer and founder of Christian Science.

New Hampshire State House & Visitor Center

107 North Main St., (603) 271-2154, gencourt.state.nh.us/nh_visitorcenter
From its Hall of Flags to the portraits of generations of New Hampshire's leaders, the New Hampshire State House repre-

Houses of Worship

This list represents a sampling of the many faith organizations present in Greater Concord.

Baptist

Trinity Baptist Church

80 Clinton St., Concord; tbcnh.org

Buddhism

Oxbow Zen Sangha

11 Oxbow Pond Rd., Canterbury; vermontzen.org

Catholic

Christ the King Parish

72 S. Main St., Concord; christthekingnh.org

Immaculate Heart of Mary Church

180 Loudon Rd., Concord
ihmnh.weebly.com

Christian Science

First Church of Christ Scientist

33 School St., Concord; christianscienceconcordnh.org

Episcopal

St. Paul's Episcopal Church

21 Centre St., Concord; stpaulsconcord.org

Islam

IQRA Islamic Society of Greater Concord

181 North Main St., Concord; iisgc.org/index.html

Jehovah's Witnesses

Kingdom Hall of Jehovah's Witnesses

199 E. Side Drive, Concord; jw.org/en

Judaism

Temple Beth Jacob

67 Broadway, Concord; tbjconcord.org

Lutheran

Concordia Lutheran Church

211 N. Main St., Concord; concordialutheranchurch.org

United Methodist

Wesley United Methodist Church

79 Clinton St., Concord; concordwumc.org

Mormon

Church of Jesus Christ of Latter-Day Saints

90 Clinton St., Concord; (603) 224-7413

Orthodox

Holy Trinity Greek Orthodox Church

68 North State St., Concord; holytrinitynh.org

Quaker

Concord Friends Meetinghouse

11 Oxbow Pond Road, Canterbury; concordfriendsmeeting.org

Seventh Day Adventist

Seventh Day Adventist Church

310 Sheep Davis Road, Concord; concordadventistchurch.org

Unitarian-Universalist

Unitarian-Universalist Church

274 Pleasant St., Concord; uua.org

Congregational / UCC

First Congregational Church

177 N. Main St., Concord; concordsfirstchurch.org

Salvation Army Church

58 Clinton St., Concord; concord.salvationarmy.org

sents an extensive legacy of rich political tradition.

The Pierce Manse

14 Horseshoe Pond Lane, (603) 225-4555, piercemanse.org
Explore the home of President Franklin Pierce, a New Hampshire native and the 14th President of the United States. Visitors will learn about what life was like in the mid-19th century for Franklin Pierce, his wife Jane, and their two sons.

COVERED BRIDGES

Contoocook Covered Railroad Bridge

Contoocook

The world's oldest surviving covered railroad bridge built in 1889.

Hopkinton-Rowell Bridge

West Hopkinton

Originally built in 1853 and restored in 1965, this classic New England bridge spans the Contoocook River.

Dalton Bridge

Warner

This historic covered bridge, built in 1853, carries Joppa Road over the Warner River.

Waterloo Bridge

Warner

Originally built in 1840 and restored in 1987, this town lattice truss bridge spans the Warner River.

LIBRARIES

Concord Public Library

Main Branch, 45 Green Street, (603) 225-8670,

concordpubliclibrary.net

Penacook Branch, 3 Merrimack Street, (603) 753-4441

Heights Branch, 14 Canterbury Road, (603) 230-4932

Three branches offer books, movies and free programs for children, teens and adults.

New Hampshire State Library

20 Park Street, (603) 271-2144, nh.gov/nhsl

The New Hampshire State Library is the first state library in America, and was founded in 1717. With more than 570,000 volumes, the library specializes in New Hampshire history, politics and sociology.

TAX-FREE SHOPPING

Historic downtown Concord offers a variety of specialty shops, cafés and restaurants. You'll find gourmet foods, books, music, clothing, antiques, crafts, cookware, jewelry, home décor and much more. Along Loudon Road, Fort Eddy Road and Storrs Street, you can shop at numerous plazas and large retail stores like Target and Best Buy. The following is a sampling of unique stores in Greater Concord.

Camping World

165 Dover Road, Chichester, (603) 798-4030, campingworld.com

Celeste Oliva

8 North Main Street, (603) 225-3866, celesteoliva.com

Company C

97 Storrs Street, (603) 226-4460, companyc.com

Concord Food Co-Op

24 South Main Street, (603) 225-6840, concordfoodcoop.coop

Dandelion

4 North Main Street, (603) 715-2451, dandelionkidsnh.com

Gibson's Bookstore

45 South Main Street, (603) 224-0562, gibsonsbookstore.com



Photo by Mulberry Creek Imagery / Concord Multicultural Festival

Originally from Iraq, now residing in New Hampshire, Saad Hindal frequently displays his work at the Concord Arts Market and the Concord Multicultural Festival.

Gondwana & Divine Clothing Company

13 North Main Street, (603) 228-1101, gondwanaclothing.com

Granite State Naturals

170 North State Street, (603) 224-9341, granitestatenaturals.com

Green Mountain Tableworx

154 North Main Street, (603) 565-5483, greenmountaintable.com

Homebody

134 North Main Street, (603) 731-9138, homebodynh.com

Indigo Blues & Co.

2 Capital Plaza, Suite 105, (603) 660-9290, indigobluesandco.com

League Of NH Craftsmen Fine Craft Gallery

36 North Main Street, (603) 228-8171, nhcrafts.org

Lilise Designer Resale

7 North Main Street, (603) 715-2009, liliseresale.com

Pitchfork Records

2 South Main Street, (603) 224-6700, pitchforkrecordsconcord.com

Pompanoosuc Mills

38 North Main Street, (603) 225-7975, pompy.com

Runner's Alley, LLC

142 North Main Street, (603) 715-5854, runnersalley.com

S & W Sports

296 South Main Street, (603) 228-1441, swsports.net

Spruce Home and Company

32 North Main Street, (603) 369-1618, sprucehomeandco.com

Things Are Cooking, Inc.

74 North Main Street, (603) 225-8377, thingsarecooking.com

Thorne's Of Concord

140 North Main Street, (603) 225-2368, facebook.com/thornesofconcord

Viking House

19 North Main Street, (603) 228-1198, vikinghouse.com



Drew Fortin Photography

An aerial view of the Concord Hospital campus.

Healthcare

A high-tech, caring network

Greater Concord's multiple hospitals and outpatient clinics provide high-tech equipment and cutting-edge treatments in state-of-the-art facilities. The area also features numerous businesses and organizations offering diverse health and wellness services — from acupuncture to nutrition to equine therapy. New Hampshire is proud of its excellent healthcare, and was the leading state in the continental U.S. to mitigate fatalities during the COVID-19 pandemic.

CONCORD HOSPITAL

250 Pleasant Street, (603) 225-2711,
concordhospital.org

This nationally accredited, not-for-profit health system provides comprehensive acute-care services, primary and specialty care, and health and wellness programs. Concord Hospital is one of three Level II Trauma Centers in New Hampshire. As a regional health resource for primary and specialized care,

the hospital provides comprehensive diagnostics, sophisticated treatment and support for more than 50 medical specialties and offers the latest medical and information technology. Specialty services include:

- Cardiovascular Institute
- Orthopaedic Institute
- Payson Center for Cancer Care
- Urologic Institute
- Women's Health Services
- Breast Care Center
- Walk-In Urgent Care

DARTMOUTH HITCHCOCK CLINICS CONCORD

253 Pleasant Street, (603) 226-2200,
Dartmouth-Health.org

As a member of Dartmouth Health, New Hampshire's only academic health system, Dartmouth Hitchcock Clinics Concord provides primary and specialty care for all ages through its large multi-

specialty practice. Patients have access to Dartmouth Hitchcock Medical Center (DHMC) in Lebanon, the Dartmouth Cancer Center and Dartmouth Health Children's, which includes the state's only children's hospital at DHMC. Primary and specialty services at Dartmouth Hitchcock Clinics Concord include:

- Allergy
- Audiology
- Bariatric Surgery
- Cardiology
- Dermatology
- Ear, Nose and Throat
- Endocrinology
- Gastroenterology (in collaboration with GI Association of NH)
- General Surgery
- Infections Disease / International Clinic
- Lab Services
- Neurology
- Obstetrics, Gynecology and Nurse Midwifery

- Orthopaedics
- Pediatrics
- Podiatry
- Radiology (X-ray, MRI, CT)
- Rheumatology
- Sports Medicine
- Vascular Surgery

OTHER PROVIDERS

Active Choice Healthcare

13 Chenell Drive, Suite 2, (603) 410-4644,
activechoicemd.com

Alternative Pain Management, PLLC

514 South Street, Unit #3, Bow
(603) 333-2384; drlindasmith.com

Breakthrough Pediatrics, PLLC

22 Bridge Street, Suite 5, (603) 856-7236
breakthroughpediatrics.com

Care Women's Center

13 West Street, (603) 224-7477
carewomenscenter.com

Concentra Urgent Care

1 Pillsbury Street, (603) 223-2300
concentra.com

Concord Imaging Center

Multiple Locations, (603) 225-0425
concordimagingcenter.com

Concord Orthopaedics, PA

264 Pleasant Street, (603) 224-3368
concordortho.com

ConvenientMD Urgent Care

8 Loudon Road, (603) 226-9000



Concord's annual Rock N' Race supports Concord Hospital's Payson Center for Cancer Care. This event typically attracts 4,000 community members who run, walk, volunteer, and show their support for cancer patients and their families.

convenientmd.com

Derry Imaging Center

81 Hall Street, (603) 537-1363
derryimaging.com

DMC Primary Care

81 Hall Street, (603) 537-1300
dmcprimarycare.com

Encompass Health Rehabilitation Hospital of Concord

254 Pleasant Street, (603) 226-9800
encompasshealth.com/ConcordRehab

Equality Health Center

38 South Main Street, (603) 225-2739
equalityhc.org

Eyefix Family Optical, LLC

217 Fisherville Road, Ste. A,
(603) 753-2085; eyefix2020.com

Granite VNA

30 Pillsbury Street, (603) 224-4093
granitevna.org

Greystone Regenerative Medicine

124 Hall St, Unit I-8, (601) 574-0306
greystoneregenmed.com

HearingLife

66 Pleasant Street, (603) 369-4873
hearinglife.com

Infinite Health Family Chiropractic

126 Loudon Road, Unit 3, (603) 753-4455
infinitehealth.biz

New England Audiology, PLLC

1 Pillsbury Street, (603) 856-8275
newenglandaudiology.com

Rodney G. Sigua DDS, MAGD, PLLC

10 Commercial Street, (603) 223-6644
drsigua.com

Samaha Cosmetic & Family Dentistry

13 Wall Street, (603) 225-2042
samahadental.com

Vibrant Health Chiropractic

783 Route 3A, Bow (603) 856-7790
vibranthealthchiropractic.org



• MISSION STATEMENT •

Community Bridges assures and maintains the integration, growth and interdependence of people with disabilities in their home communities so they have positive control over the lives they have chosen for themselves.

Community Bridges is a leader in the development of and advocacy for innovative approaches in supporting families.

162 Pembroke Road • Concord, NH 03301
PHONE: 603-225-4153 • TOLL-FREE: 1-800-499-4153
Federal Relay Service (NH Relay): 7-1-1 or 1-800-735-4423
www.communitybridgesnh.org



New Hampshire School Administrators Association

www.EDjobsNH.com

It's Free....It's Powerful....It's Connected

Visit the largest web based vacancy service for ALL educational employment opportunities in New Hampshire. The site is operated exclusively for New Hampshire's public school districts.



Search, review, and apply online
FREE!

Teaching Positions
 Elementary School
 Middle School
 High School

Administrative & Support Positions
Central Office ~ Superintendent - Assistant Superintendent - Directors
Business Managers ~ Accounting - Clerical Staff
Building Level ~ Principals, Assistant Principals & Support Staff
Principals & Support Staff ~ High School Principals & Support Staff
District Wide ~ Nurses - Substitutes - Building & Ground Staff - Cafeteria Workers - Support Positions



From Keene to Portsmouth & Pittsburg to Nashua serving
Public School Districts across New Hampshire.
For more information contact NHSAA at 603-225-3230 or email Rose at
rose@nhsaa.org.

MENTAL HEALTH

Avenues Recovery Center at New England

2 Chenell Drive, (603) 505-8365
avenuesrecovery.com/new-hampshire-drug-rehab-center

Enso Counseling Group

244 N Main St, (617) 819-0914
ensocounselinggroup.com

Granite United Way – Merrimack County Region

125 Airport Road, Suite #3,
(603) 224-2595; graniteuw.org

Homestead Inn 1765 LLC

188 King Street, Boscawen
(603) 975-0041; homesteadinn.org

NAMI New Hampshire

85 North State Street, (603) 225-5359
naminh.org

New Hampshire Coalition of Recovery Residences

2 1/2 Beacon Street, (603) 715-1514
nhcorr.org

New Hampshire Hospital

36 Clinton Street, (603) 271-5300
dhhs.nh.gov/new-hampshire-hospital

Riverbend Community Mental Health, Inc.

40 Pleasant Street, (603) 228-1600
riverbendcmhc.org

ROAD to a Better Life

22 Bridge Street, #2, (603) 415-0330
roadtoabetterlifenh.com

SENIOR CARE

Age at Home

24 Hammond Street, (603) 224-6100
ageathomenh.com

Community Action Prog./

Belknap-Merrimack Counties, Inc.

2 Industrial Park Drive, (603) 225-3295
bm-cap.org

GoodLife Programs & Activities

254 North State Street, Unit L,
(603) 228-6630; goodlifenh.org

Grey Sage Advisors

(603) 315-1048

Rest Assured Home Care, LLC

Bow (603) 715-8574
restassurednh.com

Connect 55+ Concord

23 Triangle Park Drive, (603) 715-5040
calamar.com/cobblestone-home

SENIOR LIVING

Epsom Healthcare Center

901 Suncook Valley Highway, Epsom
(603) 736-4772

Granite Ledges of Concord

151 Langley Parkway, (603) 224-0777
genesishcc.com/graniteledgesofconcord



Residents at
Havenwood
Heritage Heights
can choose to
participate in a
wide variety of
activities,
including this
zipline program
at Loon Mountain
Resort in Lincoln.

Havenwood
Heritage Heights

Havenwood Heritage Heights

33 Christian Avenue, (888) 929-8381
hwhinfo.com

Hillsbrook Village at Allenstown

2 Chester Turnpike, Allenstown
(603) 210-1321; everbrookseniorliving.com/
communities/hillsbrook-village

John H. Whitaker Place

30 Borough Road, Penacook
(603) 753-9100; whitakerplace.org

Presidential Oaks Retirement Community

200 Pleasant Street, (603) 225-6644
presidentialoaks.org

The Birches at Concord

300 Pleasant Street, (603) 224-9111
birchesatconcord.com

White Rock Senior Living Community

6 Bow Center Road, Bow (603) 724-6250
summitpmg.com

OTHER HEALTH SERVICES

Ascentria Care Alliance

261 Sheep Davis Road, Suite A1,
(603) 224-8111; ascentria.org

Aubrielle's Hope

aubriellshope.org

Back in the Saddle Equine

Therapy Center, BITS ETC

334 College Hill Road, Hopkinton
(603) 746-5681; bitsetc.org

BAYADA Hospice

194 Pleasant Street, Suite 9,
(603) 724-6689
bayada.com/offices/nh/concord/
194-pleasant-street

Better Hearing Center, LLC

2 Industrial Park Drive, Suite 12,
(603) 224-9043; betterhearingnh.com

Beyond Your Best, LLC

(603) 493-1450
beyondyourbestnh.com

Brain Injury Association of NH

52 Pleasant Street, (603) 225-8400
bianh.org

Community Bridges

162 Pembroke Road, (603) 225-4153
communitybridgesnh.org

Concord Hospital Occupational & Employee Health

Pillsbury Medical Office Building,
(603) 230-1220
concordhospital.org/medical-services/
occupational-health

Future in Sight

25 Walker Street,
(603) 224-4039; futureinsight.org

Granite State Independent Living

21 Chenell Drive,
(603) 228-9680; gsil.org

Granite State Physical Therapy, PLLC

6 Loudon Road, Suite 5,
(603) 410-6309; granitestatept.com

Health Market Connect

202 North State Street,
(603) 309-2021; hmcnh.com

Local Infusion

194 Pleasant Street, Suite 7,
(603) 208-3085, mylocalinfusion.com

Merrimack County Service Link

(866) 634-9412, servicelink.nh.gov

Natural Wellness Corner

239 Loudon Road, Suite 1A,
(603) 225-2747;
naturalwellnesscorner.com

Next Step Bionics and Prosthetics, Inc.

246 Pleasant St Suite 200,
(603) 668-3831; nextstepbandp.com

Pure Indulgence Group, LLC

54 S. State Street, (603) 228-7873
pureindulgencespa.com

Renmar DME Inc.

161 River Road, Unit 1, Bow
(603) 225-0180; renmarinc.com

SansAge Medical Aesthetics

117 Manchester Street Unit #1,
(603) 440-0271,
sansagemedicalaesthetics.com

The Prescription Center

125 North Main Street, Suite 1,
(603) 224-9591; prescription-center.com

Trend Acupuncture

163 Manchester Street, (603) 456-8294
trendacupuncture.com

Education

Quality
and diversity



Becky Field, FieldWorkPhotos.com

Project S.T.O.R.Y. and Overcomers Refugee Services host a “New Americans Got Talent” show in Concord each year. The student performers present an array of talents including music, dancing, athletics, public speaking, and more.

Public Schools

Local School Districts

The following is a directory of local public school districts. Please note that some School Administrative Units (SAUs) contain more than one school district, and enrollment figures only include students at schools in a district (e.g., for the Henniker School District, figures include Henniker elementary and middle schools but not John Stark Regional High School in Weare). This data is gathered directly from the New Hampshire Department of Education at education.nh.gov.

Concord (SAU 8)

Student Enrollment: 3,923

Teachers: 329.7

Student to Teacher Ratio: 12 to 1

Expenditures Per Pupil: \$19,773.90

ADMINISTRATIVE OFFICES: 38 Liberty Street, (603) 225-0811, sau8.org

SUPERINTENDENT: Kathleen A. Murphy, kmurphy@sau8.org

GRADE SCHOOLS:

Abbot-Downing School (K-5), 152 South Street, (603) 225-0827, ads.sau8.org

Beaver Meadow School (P-5), 40 Sewalls Falls Road, (603) 225-0853, bms.sau8.org

Broken Ground School (3-5), 51 South Curtisville Road, (603) 225-0855, bgs.sau8.org

Christa McAuliffe School (K-5), 17 North Spring Street, (603) 225-0840, cms.sau8.org

Mill Brook School (P-2), 53 South Curtisville Road, (603) 225-0830, mbs.sau8.org

MIDDLE SCHOOLS:

Rundlett Middle School (6-8), 144 South Street, (603) 225-0862, rms.sau8.org

HIGH SCHOOLS:

Concord High School (9-12), 170 Warren Street, (603) 225-0800, chs.sau8.org

Concord Regional Technical Institute (CRTC), 170 Warren Street, (603) 717-7654, thecrtc.org

Henniker (SAU 24)

Student Enrollment: 555

Teachers: 36

Student/Teacher Ratio: 15 to 1

Expenditures Per Pupil: \$19,755.97

ADMINISTRATIVE OFFICES: 258 Western Ave, (603) 428-3269, sau24.org

SUPERINTENDENT: Dr. Jacqueline S. Coe, jacqueline.coe@sau24.org

GRADE SCHOOL:

Henniker Community School (P-8), 51 Western Ave, (603) 428-3476, hennikercommunityschool.net

HIGH SCHOOL: Students attend John Stark Regional High School.

Weare (SAU 24)

Student Enrollment: 1,304

Teachers: 127.2

Student to Teacher Ratio: 10 to 1

Expenditures Per Pupil: \$16,994.53

ADMINISTRATIVE OFFICES: 258 Western Ave, Henniker, (603) 428-3269, sau24.org

SUPERINTENDENT: Dr. Jacqueline S. Coe,

jacqueline.coe@sau24.org

GRADE SCHOOL:

Center Woods Elementary (P-3), 14 Center Road, (603) 529-4500, centerwoods.net

MIDDLE SCHOOL:

Weare Middle School (4-8), 16 East Road, (603) 529-7555, wearemiddleschool.net

HIGH SCHOOL:

John Stark Regional High School (9-12), 618 North Stark Highway, (603) 529-7675, jsrhs.net

Merrimack Valley (SAU 46)

Student Enrollment: 2,436

Teachers: 188.2

Student to Teacher Ratio: 13 to 1

Expenditures Per Pupil: \$ 18,168.55

ADMINISTRATIVE OFFICES: 105 Community Drive, Penacook, (603) 753-6561, mvsdpride.org

SUPERINTENDENT: Mark T. MacLean, mmaclean@mvsdpride.org

GRADE SCHOOLS:

Andover Elementary School (K-8), 20 School Street, Andover, (603) 735-5494, aemseagles.org

Boscawen Elementary School (P-5), 1 B.E.S.T. Ave, Boscawen, (603) 753-6512, bes.mvsdpride.org

Loudon Elementary School (K-5),

7039 School Street, Loudon, (603) 783-4400, les.mvsdpride.org

Salisbury Elementary School (K-5), 6 Whittemore Road, Salisbury, (603) 648-2206, ses.mvsdpride.org

Penacook Elementary School (P-5), 60 Village Street, Penacook, (603) 753-4891, pes.mvsdpride.org

Webster Elementary School (K-5), 936 Battle Street, Webster, (603) 648-2467, wes.mvsdpride.org

MIDDLE SCHOOL:

Merrimack Valley Middle School (6-8), 14 Allen Street, Penacook, (603) 753-6336, mvms.mvsdpride.org

HIGH SCHOOLS:

Merrimack Valley High School (9-12), 106 Village Street, Penacook, (603) 753-4311, mvhs.mvsdpride.org
Merrimack Valley Learning Center (6-12), 26 Washington Street, Penacook, (603) 753- 0199, mvlc.mvsdpride.org

Pittsfield (SAU 51)

Student Enrollment: 526

Teachers: 45.4

Student to Teacher Ratio: 11.5 to 1

Expenditures Per Pupil: \$19,098.60

ADMINISTRATIVE OFFICES: 23 Oneida Street, Unit 1, (603) 435-5526,

pittsfieldnhschools.org

SUPERINTENDENT: Bryan Lane, blane@pittsfieldnhschools.org

GRADE SCHOOL:

Pittsfield Elementary School (P-5) 34 Bow Street, (603) 435-8432, pittsfieldnhschools.org/pes

MIDDLE/HIGH SCHOOL:

Pittsfield Middle High School (6-12), 23 Oneida Street, (603) 435-6701, pittsfieldnhschools.org/pmhs

Pembroke (SAU 53)

Covers Pembroke, Allenstown, Chichester and Epsom

Student Enrollment: 2,429

Teachers: 209.1

Student to Teacher Ratio: 11.5 to 1

Expenditures Per Pupil: \$7,773.71 (Pembroke), \$20,289.31 (Allenstown), \$21,885.05 (Chichester), \$20,901.25 (Epsom)

ADMINISTRATIVE OFFICES: 267 Pembroke Street, (603) 485-5187, sau.sau53.org

SUPERINTENDENT: Patty Sherman, psherman@sau53.org

GRADE SCHOOLS:

Pembroke Hill School (K-4), 300 Belanger Drive, (603) 485-9000, phs.sau53.org

Allenstown Elementary School (K-4),



Concord Imaging Center

- 3D Mammography
- Truly Open MRI
- CT Scan
- Ultrasound
- Same-Day X-Ray
- Lung Cancer Screening
- Colon Cancer Screening
- Osteoporosis Screening



Providing medical imaging services to the Greater Concord Area for nearly 40 years.

www.ConcordImagingCenter.com • (603)225-0425

30 South Main Street, (603) 485-9574,
aes.sau53.org

Chichester Central School (K-8), 219 Main
Street, (603) 798-5651, ccs.sau53.org

Epsom Central School (K-8), 282 Black
Hall Road, (603) 736-9331, ecs.sau53.org

MIDDLE SCHOOLS:

Three Rivers School (5-8),
243 Academy Road, Pembroke, (603) 485-
9539, trssau53.schoolblocks.com

MIDDLE SCHOOL:

Armand R. Dupont School (5-8),
10 1/2 School St., Allentown,
(603) 485-4474, asd.sau53.org

HIGH SCHOOL:

Pembroke Academy (9-12),
209 Academy Road, Pembroke
(603) 485-7881, pa.sau53.org

Hopkinton (SAU 66)

Student Enrollment: 905

Teachers: 83.5

Student to Teacher Ratio: 11 to 1
Expenditures Per Pupil: \$21,047.89

ADMINISTRATIVE OFFICES: 204 Maple
Street, Contoocook, (603) 746-5186,
hopkintonschools.org

SUPERINTENDENT: Michael Flynn,
mflynn@sau66.org

GRADE SCHOOLS:

Harold Martin School (P-3),
271 Main Street, (603) 746- 3473,
hopkintonschools.org

Maple Street Elementary School (4-6),
194 Maple Street, Contoocook, (603) 746-
4195, mss.hopkintonschools.org

MIDDLE/HIGH SCHOOL:

Hopkinton Middle High School (7-12),
297 Park Ave, Contoocook, (603) 746-
4167, hmhs.hopkintonschools.org

Bow (SAU 67)

Student Enrollment: 1,427

Teachers: 93

Student to Teacher Ratio: 15 to 1
Expenditures Per Pupil: \$17,026.98

ADMINISTRATIVE OFFICES: 55 Falcon Way,
(603) 224- 4728, bownet.org

SUPERINTENDENT: Marcy Kelley,
mkelley@bownet.org

GRADE SCHOOL:

Bow Elementary (P-4), 22 Bow Center
Road, (603) 225-3049, bes.bownet.org

MIDDLE SCHOOL:

Bow Memorial School (5-8), 20 Bow Center
Road, (603) 225-3212, bms.bownet.org

HIGH SCHOOL:

Bow High School (9-12), 55 Falcon Way,

(603) 228-2210, bhs.bownet.org

Canterbury (SAU 80)

Student Enrollment: 1,139

Teachers: 108.2

Student to Teacher Ratio: 10.5 to 1
Expenditures Per Pupil: \$19,411.49

ADMINISTRATIVE OFFICES: 58 School
Street, Belmont, (603) 267-9223,
sau80.org

SUPERINTENDENT: Michael J. Tursi,
mtursi@sau80.org

GRADE SCHOOLS:

Belmont Elementary (P-4), 26 Best Street,
Belmont, (603) 267-6568, bes.sau80.org

Canterbury Elementary (K-5), 15 Baptist
Road, (603) 783-9944, ces.sau80.org

MIDDLE SCHOOL:

Belmont Middle School (5-8), 38 School
Street, Belmont, (603) 267-9220,
bms.sau80.org

HIGH SCHOOL:

Belmont High School (9-12),
225 Seavey Road, Belmont,
(603) 267-6525, bhs.sau80.org

Charter Schools

This is a partial listing of charter schools,
which are independent public schools.
State authorized charter schools are funded
directly by the state; they receive no local
funding. Locally authorized charter schools
are funded at approximately 80% of the
average cost per pupil by their local district;
they receive state and local funds.

Strong Foundations Charter School (K-8)

Student Enrollment: 334

Teachers: 23.8

Student/Teacher Ratio: 14:1

715 Riverwood Drive, Pembroke, (603)
225-2715, strongfoundationsnh.org

This public charter school focuses on a
literacy and core knowledge curriculum,
with free tuition for NH residents.

Virtual Learning Academy (VLACS) Charter School (6-12)

Student Enrollment: 492

Teachers: 160

Student/Teacher Ratio: 4:1

30 Linden Street, Exeter, (603) 778-2500,
vlacs.org

VLACS offers full time or part time online
virtual learning for elementary, middle and
high school students. AP classes are
available, and tuition is free for NH
residents.

Preschool and Afterschool

(Partial listing)



Concord Monitor

The Granite YMCA.

Boys & Girls Clubs of Central New Hampshire

55 Bradley Street, Concord,
(603) 224-1061, nh youth.org

This community youth center provides
infant, toddler and preschool child care, as
well as before school, after school, summer
camp programs and basketball.

The Granite YMCA

15 North State Street (Concord branch),
(603) 228-9622, granitemymca.org

The Granite YMCA offers preschool for
children ages 1 to 5, afterschool programs
and summer day camp for children in
kindergarten through fifth grade. Full time
childcare is also available starting at 6
weeks old.

First Start Children's Center/Second Start

17 Knight Street, Concord,
(603) 228-1341, second-start.org

First Start offers affordable and effective
educational programs for adolescents,
including child care, for children 6 weeks to
10 years during the school year and up to
12 years of age for summer programs.

Project S.T.O.R.Y.

Concord, (603) 491-7740,
projectstorynh.com

This grassroots, all-volunteer organization is
dedicated to assisting and empowering
refugee and New American youth in
Concord.

White Birch Center

51 Hall Ave, Henniker, (603) 428-7860,
whitebirchcc.org

Early childhood care and education, camps
and afterschool programs are available for
children ages 9 months to 14 years.

Private Schools

(Partial listing)

The Beech Hill School (5-8)

20 Beech Hill Road, Hopkinton,
(603) 715-5129, thebeechhillschool.org

This is an innovative, independent middle school that aims to develop intellectually curious and capable young adults.

Bishop Brady School (9-12)

25 Columbus Ave, Concord,
(603) 224-7418, bishopbrady.edu

This Catholic, co-educational high school serves students from over 50 NH cities and towns, and nine countries.

Concord Christian Academy (Pre K-12)

37 Regional Drive, Concord,
(603) 228-8888, concordchristian.org

This independent, private Christian school offers a comprehensive life preparatory program.

The Derryfield School (6-12)

2108 River Road, Manchester,
(603) 669-4524, derryfield.org

The Derryfield School is an independent, co-educational college prep day school.



Concord Monitor

Bishop Brady's 2023 graduation.

Parker Academy (6-12)

2 Fisk Road, Concord, (603) 228- 4209,
parkereducation.com

This private day school is for middle and high school students.

Second Start

17 Knight Street, Concord,
(603) 228-1341, second-start.org

Second Start offers affordable and effective educational programs for adolescents, teens and adults including a New American Driving School, Adult Diploma programs, and English as a Second Language (ESL) classes.

Shaker Road School

131 Shaker Road, Concord,
(603) 224-0161, shakerroadschool.org

This private, independent school is for infants through ninth grade, and enhances a natural enthusiasm for learning, while developing respect for oneself and others.

Spaulding Academy & Family Services

72 Spaulding Road, Northfield,
(603) 286-8901, spauldingservices.org

This tax-exempt nonprofit school has residential and day programs for children ages 5-21 years, supporting exceptional children and families toward a successful future.

Saint John Regional School (Pre K-8)

61 South State Street, Concord,
(603) 225-3222, stjohregional.org

This private Catholic parochial school has more than 185 students from 25 communities.

St. Paul's School (9-12)

325 Pleasant Street, Concord,
(603) 229-4600, sps.edu


St. Paul's is a nationally recognized, independent co-educational boarding school. Approximately 500 students representing 40 states and 18 countries and 120 faculty members live on the 2,000-acre campus.

Shop & Dine Local in Concord




Open 7 Days a Week
Family Friendly
Food from Smokeshow BBQ
Outdoor Seating

603-715-2347
www.featheredfriendbrewing.com
@featheredfriendbrewing



**Goldsmiths
Gallery**

2 Capital Plaza, Suite 107
57 North Main Street
Concord, NH 03301

(603) 224-2920
www.goldsmiths-gallery.com

CONCORD MONITOR

SUPPORT LOCAL JOURNALISM

Subscribe to the Concord Monitor, recently named the best paper of its size in New England.

603-224-4287



Is trash a renewable resource?

Capital area colleges

New England College

98 Bridge Street, Henniker,
(603) 428-2000, nec.edu

“Live what you learn” serves as the foundation for how NEC approaches education and prepares students for life after college. NEC offers more than 50 associate and bachelor’s degree programs, including a robust art and design program, more than 10 master’s degree programs, and a doctoral program, all delivered in the liberal arts tradition. Students enjoy 20 NCAA Division III athletic teams and a college experience that is one of the most diverse in New Hampshire.

NHTI-Concord’s Community College

31 College Drive, Concord,
(603) 271-6484, nhti.edu

NHTI-Concord’s Community College is a dynamic public institution of higher learning that provides accessible, rigorous education for students, businesses, and the community. NHTI creates pathways for lifelong learning, career advancement, and civic engagement, offering 80+ academic programs to 4,600+ students annually. Programs offered include nursing, dental and radiology; engineering, IT and robotics;



NHTI

NHTI, Concord’s Community College.

liberal and visual arts; education, criminal justice, and more. NHTI is accredited by the Commission on Institutions of Higher Education of the NE Association of Schools and Colleges. The college has a 242-acre campus with residence halls, more than 30 student organizations, intercollegiate athletics, and a wide range of cultural activities that are open to the public. The Business Training Center (BTC) at NHTI is dedicated to improving the quality and labor market relevance of workforce investment, education, and economic development efforts by providing individuals the training, skills and credentials necessary to secure and advance employment and to provide employers with skilled workers to address workforce needs.

UNH Franklin Pierce School of Law

2 White Street, Concord,
(603) 228-1541, law.unh.edu

New Hampshire’s only law school, UNH Franklin Pierce School of Law, offers a small, intimate learning community and an innovative curriculum focused on preparing practice-ready graduates to succeed in a dynamic legal profession. Recognized as a global leader in intellectual property law, UNH Franklin Pierce School of Law has been ranked Top 10 in Intellectual Property Law by U.S. News & World Report for more than 30 years in a row – ever since the rankings began. Best Value Schools named it the #1 best value law school in 2021, and PreLaw Magazine awarded the school an A+ for its Intellectual Property program in 2022.

UNH Manchester

88 Commercial Street, Manchester,
(603) 641-4101, manchester.unh.edu

Undergraduate and graduate students at UNH Manchester enjoy the benefits of a respected UNH education in a vibrant city setting. Bringing together career-driven programs, faculty talent and a focus on experiential learning, UNH Manchester prepares students for success in today’s high-demand fields – and connects them to the wealth of opportunities in the region.



94 Silk Farm Road Concord NH | 603.856.8756

NE-415799



Caring for New Hampshire Since 1899

Home Care, Hospice Care,
Hospice House, Palliative
Care, Pediatrics & Maternal
Child Health, Wellness

603.224.4093
granitevna.org



*Making a positive
difference, one
person at a time.*

“[NHFCU’s
Financial
Wellness
Team]
delivers
down to
earth advice
and shares
in my joys at
every small
financial
success.”

-William A.

(603) 224-7731 | (800) 639-4039
70 Airport Road, Concord
47 N Main Street, Concord
71 Calef Highway, Lee

www.nhfcu.org



New Hampshire
FEDERAL CREDIT UNION



Federally insured by NCUA



Granite State Highlights

Concord is centrally located, with easy access to the state's seacoast, White Mountains and Lakes Region. Visit these recommended sites when you venture out of the Capital Region and explore all that the Granite State has to offer.

Great North Woods

Located in the northernmost edge of the state, this region is known for its serene forests with ideal locations for rural hikes, camping, hunting and fishing. There are frequent moose sightings in this region, and stunning fall foliage.

The Lancaster Motel

112 Main Street, Lancaster,
(603) 788-4921, thelancastermotel.com

The White Mountains

The White Mountains are home to the state's tallest peaks. Skiers and hikers will revel in the breathtaking views, interspersed between villages and towns with plenty of attractions, restaurants and shops for all ages to enjoy.

Clark's Trading Post

110 Daniel Webster Highway, Lincoln,
(603) 745-8913, clarksbears.com

Eagle Mountain House & Golf Club

179 Carter Notch Road, Jackson,
(603) 383-9111, eaglemt.com

Loon Mountain Resort

60 Loon Mountain Road, Lincoln,
(603) 229-5666, loonmtn.com

The Mountain Club on Loon

90 Loon Mountain Road, Lincoln,
(603) 745-2244 x 5270, mtclub.com

Mountain View Grand Resort & Spa

101 Mountain View Road, Whitefield,
(866) 966-0345, mountainviewgrand.com

The Mount Washington Cog Railway

3168 Base Station Road, Mount Washington, (603) 278-2255, thecog.com

NH Highland Games & Festival

September 15-17, 2023; Hosted by NHSCOT, Loon Mountain Resort, Lincoln

Nordic Village Resort

Route 16, Bartlett, (603) 383-9101, nordicvillage.com

Waterville Valley Resort / Conference Center

56 Packards Road, Waterville Valley, (603) 236-8311, waterville.com

The Lakes Region

If you love summer recreation on the water, visit Lake Winnepesaukee, or nearly 30 other beautiful lakes in this region. Dine outdoors with lakeside views, explore

44 The Guidebook to Greater Concord



Dan Smiley, The Laker

Enjoy scenic cruises and sunset dinner dance cruises on the M/S Mount Washington – a first-class, 230-foot excursion ship on Lake Winnepesaukee.

unique shops, and visit some of New England's best beaches.

Gilmanton Winery & Vineyards

528 Meadow Pond Road, Gilmanton,
(603) 267-8251, gilmantonwinery.com

Hart's Turkey Farm Restaurant

233 Daniel Webster Highway, Meredith,
(603) 279-6212, hartsturkeyfarm.com

Lake Winnepesaukee Golf Club (Private)

1 Lake Winnepesaukee Drive, New Durham,
(603) 569-3055, lwgcnh.com

The Margate Resort

76 Lake Street, Laconia, (603) 524-5210, themargate.com

The Wolfeboro Inn

90 North Main Street, Wolfeboro,
(603) 569-3016, wolfeboroinn.com

Mill Falls at the Lake

312 Daniel Webster Highway, Meredith,
(603) 622-6455, millfalls.com

Mount Washington Cruises

211 Lakeside Avenue, Laconia (Weirs Beach), (603) 366-5531, cruisenh.com

Tanger Outlets Tilton

120 Laconia Road, Suite 134, Tilton,
(603) 286-7880, tangeroutlets.com/tilton

Dartmouth / Lake Sunapee Region

Named after prestigious Dartmouth College, this region offers water sports, multiple attractions and scenic views of mountains, covered bridges and country roads.

Colby Hill Inn/The Grazing Room

33 The Oaks Street, Henniker,

(603) 428-3281, colbyhillinn.com

90th Annual League of NH Craftsmen Fair

August 5-13, 2023,
Mount Sunapee Resort, Newbury

Mt. Kearsarge Indian Museum

18 Highlawn Road, Warner,
(603) 456-2600, indianmuseum.org

Rosewood Country Inn

67 Pleasant View Road, Bradford,
(603) 938-5253, rosewoodcountryinn.com

The Seacoast

The state's 18 miles of seacoast are fantastic for swimming and surfing. The coastline is surrounded by art galleries, restaurants, bike trails, historic sites and much more.

New Hampshire Art Association

136 State Street, Portsmouth,
(603) 431-4230, nhartassociation.org

Northwoods Brewing Co. / Johnsons Seafood and Steak

1334 1st NH Turnpike, Northwood,
(603) 942-6400,
northwoodsbrewingcompany.com

Southern New Hampshire

In close proximity to Boston, Southern New Hampshire includes urban areas with lots to do and see. You'll still find pristine hikes, quaint towns and scenic views interspersed between larger cities and towns.

Tuscan Kitchen & Market

67 Main Street, Salem, (603) 952-4875,
tuscanbrands.com

Fast Facts

REALTORS

For information on real estate agencies that handle sales of existing and new homes as well as land listings, visit capitalregion-board.com or call the Capital Region Board of REALTORS at (603) 225-5052.

DRIVER'S LICENSES

Driver's licenses are obtained at the NH Division of Motor Vehicles. If it is your first license, you will take a written test, a driving test and an eye exam. You must pass all three to be issued a license. If you already have a valid driver's license from another state, it must be surrendered, and the driving and written tests are not required, but you will be required to take the eye exam. You will also receive a driver's manual on the state's motor vehicle laws. For more information, visit dmv.nh.gov or call (603) 271-2371.

CAR REGISTRATION

Bring your title or certificate of title along with proof of residency (utility bill, lease agreement, payroll check stub, etc.) to your town clerk (in Concord, the Tax Collector's Office).



New Hampshire's capitol building is located in the heart of downtown Concord.

You must pay a fee based upon the Manufactured Suggested Retail Price, along with other fees. You will have the option to pay the State of NH Motor Vehicle Fees at City Hall or pay the Division of Motor Vehicles directly by visiting 23 Hazen Drive in Concord. State fees are based upon the weight of the vehicle, and you will receive new plates and stickers. New residents must apply for NH titles within 60 days. Within 10 days after registering your vehicle, it must be inspected and emission tested.

VOTER REGISTRATION

If you are a U.S. citizen, a NH resident, and aged 18+ on or before Election Day, you may register to vote by completing a form at your city or town clerk's office. You may register to vote in the clerk's office up to 10 days prior to any given election. Residents may also register to vote at the polls on Election Day. You will be required to provide proof of residence, citizenship and age. You must complete another voter registration form if you move or change your name or your party affiliation.

MARRIAGE LICENSES

Couples getting married in the state may apply for their marriage license at any city or town clerk's office in the state. You must be age 18+ to obtain a license without going through probate court. You will need to provide photo ID and, if previously married or in a civil union, you must provide the certified document that ended the last marriage or civil union, such as a divorce decree, annulment papers, dissolution, or death certificate. The marriage license is valid for 90 days from the date of application. The NH Marriage License Fee is \$50.

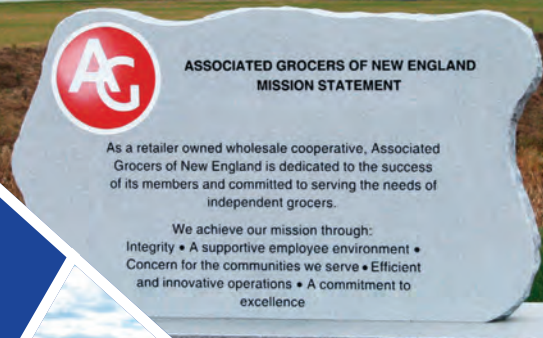
DOG LICENSES

The state requires that every owner or keeper of a dog aged 4+ months to annually register and license their dog in the city or town in which the dog is kept. Proof of rabies vaccination is required by law in order to receive a dog license. Licensing fees vary from city to town. Regardless of when the license is obtained, it must be valid from May 1 to April



*Delivering a difference
to Independent
Grocery Retailers*

At Associated Grocers of New England,



Our commitment to our customers has helped us become the fastest growing retailer-owned cooperative grocery wholesaler in New England.

We are an employer of choice in the Greater Concord community and are proud to be an active partner with many charitable organizations.



Associated Grocers of New England, Inc. • 11 Cooperative Way, PO Box 6000 • Pembroke, NH 03275 • 603-223-6710

30 each year. The state requires clerks to issue a \$25 fine to the owner or keeper of an unlicensed dog.

HUNTING & FISHING LICENSES

State licenses are required for individuals aged 16+ to fish in NH Fish & Game Department inland waters, or to hunt. Licenses are issued by state-authorized sporting goods shops and general stores. They can also be purchased online at wildlife.state.nh.us/licensing.

BOAT LICENSES

All boats with engines must be registered and show the proper NH decals on the stern. This also applies to all sailboats and wind surfing vessels over 12 feet long. New boat registrations and renewals can be processed in the Collections Office at 41 Green Street in Concord during regular business hours for residents and non-residents. Registrations can also be obtained from authorized marine dealers, some sporting goods stores, or the NH Department of Safety. NH has a mandatory boating education law. Everyone aged 16+ who operates a motorboat over 25 horsepower in NH waters must have a boating education certificate. Courses and exams are managed by the NH Department of Safety.

TAXES

AUTOMOBILE SALES

There is no automobile sales tax in NH.

PERSONAL INCOME

There is no state income tax in New Hampshire.

PROPERTY

Municipalities set local property tax rates

based on the annual budget.

SALES AND USE

There are no sales and use taxes in NH.

AUTOMOBILE EXCISE

There is no automobile excise tax in NH.

MEALS & RENTALS

There is an 8.5% state tax on room rentals and prepared meals.

ALCOHOLIC BEVERAGES

NH owns and manages liquor stores for distilled spirits and wine. There is no state tax on liquor. Beer and wine are sold in supermarkets and convenience stores.

UTILITIES

ELECTRICITY

Electrical energy in the area is provided by Eversource, (800) 662-7764, eversource.com; Liberty Utilities, (800) 833-4200, libertyutilities.com; and Unitil, (800) 852-3339, unitil.com.

NATURAL GAS

Natural gas is provided by Liberty Utilities, (800) 833-4200, libertyutilities.com. The service area includes Allenstown, Bow, Boscawen, Canterbury, Concord, Franklin, Loudon and Pembroke.

HEATING OIL & PROPANE

Propane and heating oil are provided by Ayer & Goss, (603) 428-3333, ayerandgoss.com; Eastern Propane & Oil, (603) 783-5955, eastern.com; EnergyNorth Propane, (603) 225-6660, energynorthpropane.com; H.R. Clough, (603) 746-3456, hrclough.com; Johnny Prescott and Son Co., (603) 225-5991, prescott-toil.com; Palmer Gas & Oil, (603) 898-7986, palmergas.com; and Proulx Oil & Propane, (800) 287-1921, proulxoilandpropane.com.

WATER & SEWER

In Concord, water is supplied by a municipal

system from a filtration plant. For more information, visit concordnh.gov or call (603) 225-8693. Outlying towns have either total, partial or no public water and sewer services.

WASTE DISPOSAL & RECYCLING

Concord provides weekly curbside residential solid waste and recycling services. Residents who use this service are required to put their trash in city-issued purple Pay-As-You-Throw bags that can be purchased at retail outlets throughout the community. Recycling bins are available to Concord residents and can be picked up at General Services, 311 North State Street. For more information, visit concordnh.gov. Most surrounding towns have local waste/recycling facilities where residents bring their sorted trash for disposal. Check with your town for details or contact Casella Resource Solutions, (800) 227-3552, casella.com; or Zero Waste Recycling Service, (603) 228-6900, zerowastenh.com.

TELEPHONE SERVICE

Companies offering telephone service include Arcomm Communications Corp., (603) 464-4600, arcomm1.com; Breezeline, (888) 536-9600, breezeline.com; Comcast Business, (617) 279-5015, business.comcast.com; Consolidated Communications, (866) 984-2001 (residential) or (866) 984-3001 (business), consolidated.com; FirstLight Communications, (603) 766-1000, firstlight.net; TDS Telecommunications Corp., (877) 241-8468, tdstelecom.com; Triplet Computers, LLC, (603) 410-6770, trpcomp.com; and TwinState Technologies, (603) 230-9598, twinstatetech.com.

INTERNET & CABLE

Cable television, digital television and high-speed internet service is provided by Breezeline, (888) 536-9600, breezeline.com; and Comcast/Xfinity, (800) 934-6489, xfinity.com.



CONNECT → GROW → IMPACT

Join our community of nearly **900**
diverse businesses and organizations

Business Visibility • Networking Opportunities • Job Postings
Employee Discounts • Workshops & Learning Opportunities
Advertising to Tourists & Local Professionals
Leadership Opportunities • Arts & Community Initiatives
Advocacy & Workforce Development

Stop by the **Capital Region Visitor Center** for maps, gifts
and fun local and statewide recommendations!

concordnhchamber.com • (603) 224-2508



Fuel • Service • Equipment
603.898.7986 | PalmerGas.com
Family Owned Since 1932



**CONTINENTAL
PAVING, INC.**

1 Continental Drive
Londonderry, NH 03053
Phone: **(603) 437-5387**
www.continentalpaving.com

BABY, DRIVE THAT CAR!



Let us handle the details while you cruise into the prime of your life. Come see how good later life can be. Stop by, have lunch, and we'll show you around our beautiful senior living community.

Call 603-210-1321 to schedule a visit!

Hillsbrook Village at Allenstown

An Everbrook Senior Living Community

2 Chester Tpke • Allenstown, NH • HillsbrookVillageNH.com

Centered around community.

That's **MERRIMACK** Style.



Merrimack County Savings Bank is dedicated to building meaningful connections for the residents and businesses of the Greater Concord Region. Stop by one of our branches in Concord, Bow, Contoocook, Hooksett, or Nashua, and tell us how we can connect you with your goals and dreams.



MERRIMACK
COUNTY SAVINGS BANK

NMLS #433938

Member
FDIC

